

Product datasheet for **TA332001**

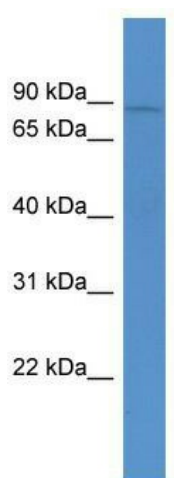
ABCB10 Rabbit Polyclonal Antibody

Product data:

Product Type:	Primary Antibodies
Applications:	WB
Recommended Dilution:	WB
Reactivity:	Mouse
Host:	Rabbit
Isotype:	IgG
Clonality:	Polyclonal
Immunogen:	The immunogen for Anti-Abcb10 Antibody: synthetic peptide corresponding to a region of Mouse. Synthetic peptide located within the following region: NGIRVYLMQSSGQSIVNRLRTSLFSSILRQEVAFFDKTRTGELINRLSSD
Formulation:	Liquid. Purified antibody supplied in 1x PBS buffer with 0.09% (w/v) sodium azide and 2% sucrose. <i>Note that this product is shipped as lyophilized powder to China customers.</i>
Conjugation:	Unconjugated
Storage:	Store at -20°C as received.
Stability:	Stable for 12 months from date of receipt.
Predicted Protein Size:	77 kDa
Gene Name:	ATP binding cassette subfamily B member 10
Database Link:	NP_036221 Entrez Gene 56199 Mouse Q9NRK6
Background:	Abcb10 may mediate critical mitochondrial transport functions related to heme biosynthesis.
Synonyms:	EST20237; M-ABC2; MTABC2
Note:	Immunogen sequence homology: Dog: 100%; Pig: 100%; Rat: 100%; Human: 100%; Mouse: 100%; Bovine: 100%; Rabbit: 100%; Guinea pig: 100%; Horse: 93%; Goat: 85%; Zebrafish: 85%
Protein Families:	Druggable Genome, Transmembrane
Protein Pathways:	ABC transporters



[View online »](#)

Product images:

WB Suggested Anti-Abcb10 Antibody Titration:
0.2-1 ug/ml; ELISA Titer: 1: 312500; Positive
Control: Mouse Spleen