

Product datasheet for TA331999

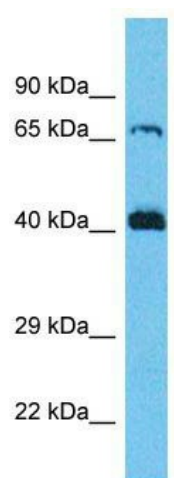
SERGEF Rabbit Polyclonal Antibody

Product data:

Product Type:	Primary Antibodies
Applications:	WB
Recommended Dilution:	WB
Reactivity:	Human
Host:	Rabbit
Isotype:	IgG
Clonality:	Polyclonal
Immunogen:	The immunogen for Anti-SERGEF Antibody is: synthetic peptide directed towards the C-terminal region of Human SERGEF. Synthetic peptide located within the following region: HPALVQDPKVTYLSPDAIEDTESQKAMDKERNWKERQSETSTQSQSDWSR
Formulation:	Liquid. Purified antibody supplied in 1x PBS buffer with 0.09% (w/v) sodium azide and 2% sucrose.
Conjugation:	Unconjugated
Storage:	Store at -20°C as received.
Stability:	Stable for 12 months from date of receipt.
Predicted Protein Size:	48 kDa
Gene Name:	secretion regulating guanine nucleotide exchange factor
Database Link:	NP_036271 Entrez Gene 26297 Human Q9UGK8
Background:	SERGEF is a probable guanine nucleotide exchange factor (GEF), which may be involved in the secretion process.
Synonyms:	DELGEF; Gnefr
Note:	Immunogen sequence homology: Human: 100%


[View online »](#)

Product images:



Host: Rabbit; Target Name: SERGEF; Sample
Tissue: MCF7 Whole cell lysates; Antibody
Dilution: 1.0ug/ml