

## Product datasheet for **TA331994**

### **RAB3GAP2 Rabbit Polyclonal Antibody**

#### **Product data:**

<b>Product Type:</b>	Primary Antibodies
<b>Applications:</b>	WB
<b>Recommended Dilution:</b>	WB
<b>Reactivity:</b>	Human
<b>Host:</b>	Rabbit
<b>Isotype:</b>	IgG
<b>Clonality:</b>	Polyclonal
<b>Immunogen:</b>	The immunogen for Anti-RAB3GAP2 Antibody is: synthetic peptide directed towards the middle region of Human RAB3GAP2. Synthetic peptide located within the following region: SWLQDCVLSLSPTNDLMVIAREQKAVFLVPKWKYSDKGKEEMQFAVGWSG
<b>Formulation:</b>	Liquid. Purified antibody supplied in 1x PBS buffer with 0.09% (w/v) sodium azide and 2% sucrose. <i>Note that this product is shipped as lyophilized powder to China customers.</i>
<b>Purification:</b>	Affinity Purified
<b>Conjugation:</b>	Unconjugated
<b>Storage:</b>	Store at -20°C as received.
<b>Stability:</b>	Stable for 12 months from date of receipt.
<b>Predicted Protein Size:</b>	22 kDa
<b>Gene Name:</b>	RAB3 GTPase activating non-catalytic protein subunit 2
<b>Database Link:</b>	<a href="#">NP_036546</a> <a href="#">Entrez Gene 25782 Human</a> <a href="#">Q9H2M9</a>
<b>Background:</b>	The protein encoded by this gene belongs to the RAB3 protein family, members of which are involved in regulated exocytosis of neurotransmitters and hormones. This protein forms the Rab3 GTPase-activating complex with RAB3GAP1, where it constitutes the regulatory subunit, whereas the latter functions as the catalytic subunit. This gene has the highest level of expression in the brain, consistent with it having a key role in neurodevelopment. Mutations in this gene are associated with Martsolf syndrome.

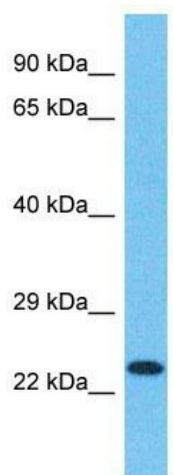


[View online »](#)

**Synonyms:** p150; RAB3-GAP150; RAB3GAP150; SPG69; WARBM2

**Note:** Immunogen sequence homology: Dog: 100%; Human: 100%; Rat: 93%; Bovine: 93%; Pig: 92%; Guinea pig: 92%; Mouse: 86%

### Product images:



Host: Rabbit

Target Name: RAB3GAP2

Sample Tissue: Fetal Liver Lysate

Antibody Dilution: 1.0µg/ml

Host: Rabbit; Target Name: RAB3GAP2; Sample Tissue: Fetal Liver lysates; Antibody Dilution: 1.0ug/ml