

## Product datasheet for TA331991

### GLS2 Rabbit Polyclonal Antibody

#### Product data:

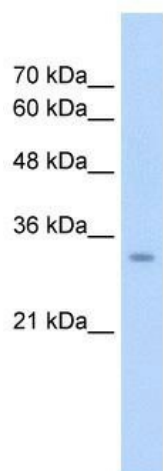
Product Type:	Primary Antibodies
Applications:	IHC, WB
Recommended Dilution:	WB, IHC
Reactivity:	Human
Host:	Rabbit
Isotype:	IgG
Clonality:	Polyclonal
Immunogen:	The immunogen for Anti-GLS2 Antibody: synthetic peptide directed towards the middle region of human GLS2. Synthetic peptide located within the following region: FVGKEPSGLRYNKLNLNEEGIPHNPMVNAGAIIVSSLIKMDCNKAEKFD
Formulation:	Liquid. Purified antibody supplied in 1x PBS buffer with 0.09% (w/v) sodium azide and 2% sucrose. <i>Note that this product is shipped as lyophilized powder to China customers.</i>
Conjugation:	Unconjugated
Storage:	Store at -20°C as received.
Stability:	Stable for 12 months from date of receipt.
Predicted Protein Size:	36 kDa
Gene Name:	glutaminase 2
Database Link:	<a href="#">NP_037399</a> <a href="#">Entrez Gene 27165 Human</a> <a href="#">Q9UI32</a>
Background:	GLS2 is a mitochondrial phosphate-activated glutaminase that catalyzes the hydrolysis of glutamine to stoichiometric amounts of glutamate and ammonia. This protein is functionally similar to the kidney glutaminase but is a little smaller in size. Originally thought to be liver-specific, this protein has been found in other tissues as well.
Synonyms:	GA; GLS; hLGA; LGA
Note:	Immunogen sequence homology: Dog: 100%; Pig: 100%; Rat: 100%; Horse: 100%; Human: 100%; Mouse: 100%; Bovine: 93%; Rabbit: 93%; Guinea pig: 93%; Zebrafish: 79%



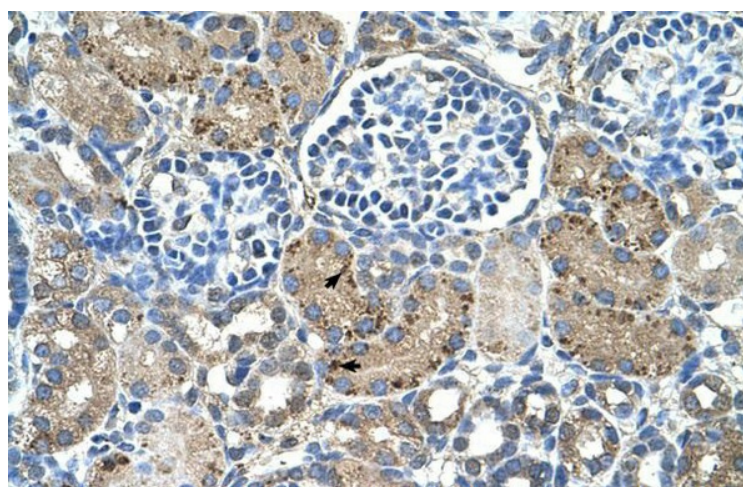
[View online »](#)

**Protein Pathways:** Alanine, aspartate and glutamate metabolism, Arginine and proline metabolism, D-Glutamine and D-glutamate metabolism, Metabolic pathways, Nitrogen metabolism

**Product images:**



WB Suggested Antibody Titration: 2.5ug/ml;  
Positive Control: HepG2; GLS2 is supported by  
BioGPS gene expression data to be expressed in  
HepG2



Human kidney