

## Product datasheet for **TA331987**

### GCDH Rabbit Polyclonal Antibody

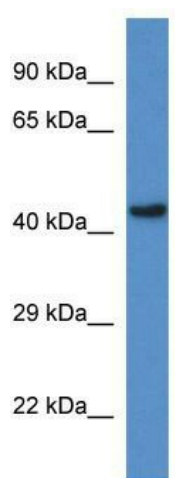
#### Product data:

|                         |  |
|-------------------------|--|
| Product Type:           | Primary Antibodies   |
| Applications:           | WB   |
| Recommended Dilution:   | WB   |
| Reactivity:             | Rat  |
| Host:                   | Rabbit   |
| Isotype:                | IgG  |
| Clonality:              | Polyclonal   |
| Immunogen:              | The immunogen for Anti-Gcdh Antibody: synthetic peptide corresponding to a region of Rat. Synthetic peptide located within the following region:<br>LQLGRLKDQDKATPEMVSLKRNCGKALDIARQARDILGGNGISDEYHV |
| Formulation:            | Liquid. Purified antibody supplied in 1x PBS buffer with 0.09% (w/v) sodium azide and 2% sucrose.<br><i>Note that this product is shipped as lyophilized powder to China customers.</i>              |
| Conjugation:            | Unconjugated   |
| Storage:                | Store at -20°C as received.  |
| Stability:              | Stable for 12 months from date of receipt.   |
| Predicted Protein Size: | 49 kDa   |
| Gene Name:              | glutaryl-CoA dehydrogenase   |
| Database Link:          | <a href="#">NP_039663</a><br><a href="#">Entrez Gene 364975 Rat</a><br><a href="#">Q92947</a>  |
| Background:             | The function of this protein remains unknown.  |
| Synonyms:               | ACAD5; GCD   |
| Note:                   | Immunogen sequence homology: Human: 100%; Bovine: 100%; Dog: 93%; Rat: 93%; Horse: 93%; Mouse: 93%; Rabbit: 92%; Pig: 86%; Guinea pig: 85%; Zebrafish: 79%   |
| Protein Families:       | Druggable Genome   |
| Protein Pathways:       | Fatty acid metabolism, Lysine degradation, Metabolic pathways, Tryptophan metabolism   |



[View online »](#)

## Product images:



WB Suggested Anti-Gcdh Antibody; Titration: 1.0 ug/ml; Positive Control: Rat Brain