

Product datasheet for **TA331985**

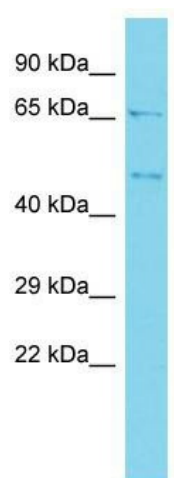
BZW2 Rabbit Polyclonal Antibody

Product data:

Product Type:	Primary Antibodies
Applications:	WB
Recommended Dilution:	WB
Reactivity:	Human
Host:	Rabbit
Isotype:	IgG
Clonality:	Polyclonal
Immunogen:	The immunogen for Anti-BZW2 Antibody is: synthetic peptide directed towards the N-terminal region of Human BZW2. Synthetic peptide located within the following region: LDYRRYADTLFDILVAGSMLAPGGTRIDDGDKTKMTNHCVFSANEDHETI
Formulation:	Liquid. Purified antibody supplied in 1x PBS buffer with 0.09% (w/v) sodium azide and 2% sucrose. <i>Note that this product is shipped as lyophilized powder to China customers.</i>
Conjugation:	Unconjugated
Storage:	Store at -20°C as received.
Stability:	Stable for 12 months from date of receipt.
Predicted Protein Size:	48 kDa
Gene Name:	basic leucine zipper and W2 domains 2
Database Link:	NP_054757 Entrez Gene 28969 Human Q9Y6E2
Background:	BZW2 may be involved in neuronal differentiation.
Synonyms:	HSPC028; MST017; MSTP017
Note:	Immunogen sequence homology: Dog: 100%; Pig: 100%; Rat: 100%; Horse: 100%; Human: 100%; Mouse: 100%; Bovine: 100%; Rabbit: 100%; Guinea pig: 100%; Zebrafish: 86%



[View online »](#)

Product images:

Host: Rabbit; Target Name: BZW2; Sample Tissue: ACHN Whole cell lysates; Antibody Dilution: 1.0ug/ml; BZW2 is supported by BioGPS gene expression data to be expressed in ACHN