

Product datasheet for **TA331984**

C11orf51 (ANAPC15) Rabbit Polyclonal Antibody

Product data:

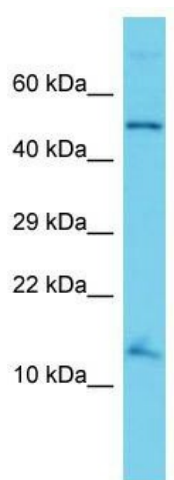
| | |
|-------------------------|--|
| Product Type: | Primary Antibodies |
| Applications: | WB |
| Recommended Dilution: | WB |
| Reactivity: | Human |
| Host: | Rabbit |
| Isotype: | IgG |
| Clonality: | Polyclonal |
| Immunogen: | The immunogen for Anti-ANAPC15 Antibody is: synthetic peptide directed towards the N-terminal region of Human ANAPC15. Synthetic peptide located within the following region: EETELQQEQQHQA WLQSI AEKDN NLVPIGK PASEHYDDEEEDEDED |
| Formulation: | Liquid. Purified antibody supplied in 1x PBS buffer with 0.09% (w/v) sodium azide and 2% sucrose. <i>Note that this product is shipped as lyophilized powder to China customers.</i> |
| Conjugation: | Unconjugated |
| Storage: | Store at -20°C as received. |
| Stability: | Stable for 12 months from date of receipt. |
| Predicted Protein Size: | 13 kDa |
| Gene Name: | anaphase promoting complex subunit 15 |
| Database Link: | NP_054761 Entrez Gene 25906 Human P60006 |
| Background: | ANAPC15 is a component of the anaphase promoting complex/cyclosome (APC/C), a cell cycle-regulated E3 ubiquitin ligase that controls progression through mitosis and the G1 phase of the cell cycle. In the complex, it plays a role in the release of the mitotic checkpoint complex (MCC) from the APC/C: not required for APC/C activity itself, but promotes the turnover of CDC20 and MCC on the APC/C, thereby participating to the responsiveness of the spindle assembly checkpoint. It is also required for degradation of CDC20. |
| Synonyms: | APC15; C11orf51; HSPC020 |



[View online »](#)

Note: Immunogen sequence homology: Dog: 100%; Pig: 100%; Rat: 100%; Horse: 100%; Human: 100%; Mouse: 100%; Bovine: 100%; Rabbit: 100%; Zebrafish: 90%; Yeast: 82%

Product images:



Host: Rabbit; Target Name: ANAPC15; Sample Tissue: HT1080 Whole Cell lysates; Antibody Dilution: 1.0ug/ml