

Product datasheet for **TA331983**

MACROD1 Rabbit Polyclonal Antibody

Product data:

Product Type:	Primary Antibodies
Applications:	WB
Recommended Dilution:	WB
Reactivity:	Human
Host:	Rabbit
Isotype:	IgG
Clonality:	Polyclonal
Immunogen:	The immunogen for Anti-MACROD1 Antibody is: synthetic peptide directed towards the N-terminal region of Human MACROD1. Synthetic peptide located within the following region: MAAKVDLSTSTDWKEAKSFLKGLSDKQREEHYFCKDFVRLKKIPTWKEMA
Formulation:	Liquid. Purified antibody supplied in 1x PBS buffer with 0.09% (w/v) sodium azide and 2% sucrose. <i>Note that this product is shipped as lyophilized powder to China customers.</i>
Conjugation:	Unconjugated
Storage:	Store at -20°C as received.
Stability:	Stable for 12 months from date of receipt.
Predicted Protein Size:	36 kDa
Gene Name:	MACRO domain containing 1
Database Link:	NP_054786 Entrez Gene 28992 Human Q9BQ69
Background:	MACROD1 deacetylates O-acetyl-ADP ribose, a signaling molecule generated by the deacetylation of acetylated lysine residues in histones and other proteins. It plays a role in estrogen signaling. Binds to androgen receptor (AR) and amplifies the transactivation function of AR in response to androgen and may play an important role in carcinogenesis and/or progression of hormone-dependent cancers by feed-forward mechanism that activates ESR1 transactivation. It could be an ESR1 coactivator, providing a positive feedback regulatory loop for ESR1 signal transduction and could be involved in invasive growth by down-regulating CDH1 in endometrial cancer cells. MACROD1 enhances ESR1-mediated transcription activity.

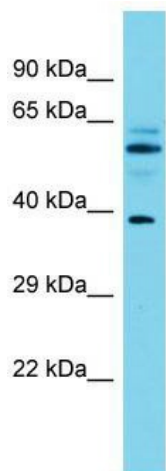


[View online »](#)

Synonyms: LRP16

Note: Immunogen sequence homology: Pig: 100%; Rat: 100%; Horse: 100%; Human: 100%; Mouse: 100%; Bovine: 100%; Guinea pig: 100%; Dog: 92%

Product images:



Host: Rabbit; Target Name: MACROD1; Sample Tissue: Fetal Brain lysates; Antibody Dilution: 1.0ug/ml