

Product datasheet for **TA331982**

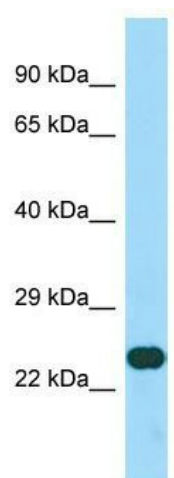
CCDC59 Rabbit Polyclonal Antibody

Product data:

Product Type:	Primary Antibodies
Applications:	WB
Recommended Dilution:	WB
Reactivity:	Human
Host:	Rabbit
Isotype:	IgG
Clonality:	Polyclonal
Immunogen:	The immunogen for Anti-CCDC59 Antibody is: synthetic peptide directed towards the C-terminal region of Human CCDC59. Synthetic peptide located within the following region: EPLFEDQCSFDQPQPEEQCIKTVNSFTIPKKNKKKTSNQKAQEEYEQIQA
Formulation:	Liquid. Purified antibody supplied in 1x PBS buffer with 0.09% (w/v) sodium azide and 2% sucrose. <i>Note that this product is shipped as lyophilized powder to China customers.</i>
Conjugation:	Unconjugated
Storage:	Store at -20°C as received.
Stability:	Stable for 12 months from date of receipt.
Predicted Protein Size:	27 kDa
Gene Name:	coiled-coil domain containing 59
Database Link:	NP_054886 Entrez Gene 29080 Human Q9P031
Background:	CCDC59 is a component of the transcription complexes of the pulmonary surfactant-associated protein-B (SFTPB) and -C (SFTPC). It enhances homeobox protein Nkx-2.1-activated SFTPB and SFTPC promoter activities.
Synonyms:	BR22; HSPC128; TAP26
Note:	Immunogen sequence homology: Pig: 100%; Rat: 100%; Horse: 100%; Human: 100%; Mouse: 100%; Bovine: 100%; Rabbit: 100%; Guinea pig: 93%; Dog: 86%



[View online »](#)

Product images:

Host: Rabbit; Target Name: CCDC59; Sample
Tissue: HepG2 Whole Cell lysates; Antibody
Dilution: 1.0ug/ml