

Product datasheet for **TA331981**

CNPY2 Rabbit Polyclonal Antibody

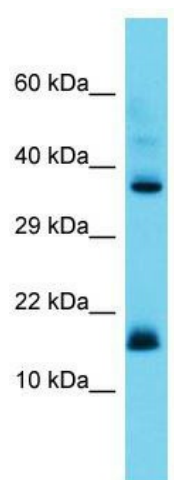
Product data:

| | |
|-------------------------|----------------------------------------------------------------------------------------------------------------------------------------------------------------------------------------------------------------------------|
| Product Type: | Primary Antibodies |
| Applications: | WB |
| Recommended Dilution: | WB |
| Reactivity: | Human |
| Host: | Rabbit |
| Isotype: | IgG |
| Clonality: | Polyclonal |
| Immunogen: | The immunogen for Anti-CNPY2 Antibody is: synthetic peptide directed towards the middle region of Human CNPY2. Synthetic peptide located within the following region: DGSQSVVEVPYARSEAHLTELEEICDRMKEYGEQIDPSTHRKNYVRVVG |
| Formulation: | Liquid. Purified antibody supplied in 1x PBS buffer with 0.09% (w/v) sodium azide and 2% sucrose. <i>Note that this product is shipped as lyophilized powder to China customers.</i> |
| Conjugation: | Unconjugated |
| Storage: | Store at -20°C as received. |
| Stability: | Stable for 12 months from date of receipt. |
| Predicted Protein Size: | 20 kDa |
| Gene Name: | canopy FGF signaling regulator 2 |
| Database Link: | NP_055070 Entrez Gene 10330 Human Q9Y2B0 |
| Background: | CNPY2 is a positive regulator of neurite outgrowth by stabilizing myosin regulatory light chain (MRLC). It prevents MIR-mediated MRLC ubiquitination and its subsequent proteasomal degradation. |
| Synonyms: | HP10390; MSAP; TMEM4; ZSIG9 |
| Note: | Immunogen sequence homology: Dog: 100%; Pig: 100%; Rat: 100%; Horse: 100%; Human: 100%; Mouse: 100%; Bovine: 100%; Rabbit: 100%; Guinea pig: 100% |



[View online »](#)

Product images:



Host: Rabbit; Target Name: CNPY2; Sample
Tissue: Placenta lysates; Antibody Dilution:
1.0ug/ml