

## Product datasheet for **TA331980**

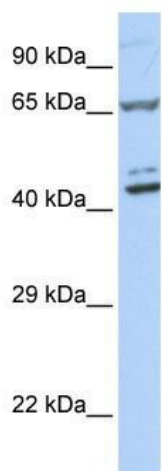
### ZNF324 Rabbit Polyclonal Antibody

#### Product data:

Product Type:	Primary Antibodies
Applications:	WB
Recommended Dilution:	WB
Reactivity:	Human
Host:	Rabbit
Isotype:	IgG
Clonality:	Polyclonal
Immunogen:	The immunogen for Anti-ZNF324 Antibody: synthetic peptide directed towards the middle region of human ZNF324. Synthetic peptide located within the following region: TEHALLGRQPRTPERQKPCAQEVPGRTFGSAQDLEAAGGRGHHRMGAVWQ
Formulation:	Liquid. Purified antibody supplied in 1x PBS buffer with 0.09% (w/v) sodium azide and 2% sucrose.
Conjugation:	Unconjugated
Storage:	Store at -20°C as received.
Stability:	Stable for 12 months from date of receipt.
Predicted Protein Size:	61 kDa
Gene Name:	zinc finger protein 324
Database Link:	<a href="#">NP_055162</a> <a href="#">Entrez Gene 25799 Human</a> <a href="#">O75467</a>
Background:	ZNF324 belongs to the krueppel C2H2-type zinc-finger protein family. It contains 9 C2H2-type zinc fingers and 1 KRAB domain. ZNF324 may be involved in transcriptional regulation.
Synonyms:	ZF5128; ZNF324A
Note:	Immunogen sequence homology: Human: 100%
Protein Families:	Transcription Factors



[View online »](#)

**Product images:**

WB Suggested Anti-ZNF324 Antibody Titration:  
0.2-1 ug/ml; ELISA Titer: 1: 12500; Positive  
Control: 721\_B cell lysate ZNF324 is supported by  
BioGPS gene expression data to be expressed in  
721\_B