

Product datasheet for TA331979

PALD (PALD1) Rabbit Polyclonal Antibody

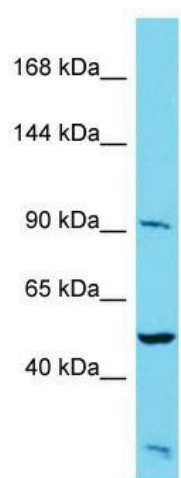
Product data:

Product Type:	Primary Antibodies
Applications:	WB
Recommended Dilution:	WB
Reactivity:	Human
Host:	Rabbit
Isotype:	IgG
Clonality:	Polyclonal
Immunogen:	The immunogen for Anti-PALD1 Antibody is: synthetic peptide directed towards the N-terminal region of Human PALD1. Synthetic peptide located within the following region: FRRVLQKLQKDGHRECVIFCVREEPVLFLRADEDFVSYTPRDKQNLHENL
Formulation:	Liquid. Purified antibody supplied in 1x PBS buffer with 0.09% (w/v) sodium azide and 2% sucrose. <i>Note that this product is shipped as lyophilized powder to China customers.</i>
Conjugation:	Unconjugated
Storage:	Store at -20°C as received.
Stability:	Stable for 12 months from date of receipt.
Predicted Protein Size:	94 kDa
Gene Name:	phosphatase domain containing, paladin 1
Database Link:	NP_055246 Entrez Gene 27143 Human Q9ULE6
Background:	The function of this protein remains unknown.
Synonyms:	KIAA1274; PALD
Note:	Immunogen sequence homology: Horse: 100%; Human: 100%; Bovine: 100%; Dog: 86%; Pig: 86%; Guinea pig: 86%; Rat: 79%



[View online »](#)

Product images:



Host: Rabbit; Target Name: PALD1; Sample
Tissue: HepG2 Whole Cell lysates; Antibody
Dilution: 1.0ug/ml