

Product datasheet for TA331977

P2Y10 (P2RY10) Rabbit Polyclonal Antibody

Product data:

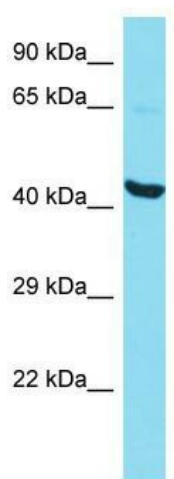
Product Type:	Primary Antibodies
Applications:	WB
Recommended Dilution:	WB
Reactivity:	Human
Host:	Rabbit
Isotype:	IgG
Clonality:	Polyclonal
Immunogen:	The immunogen for Anti-P2RY10 Antibody is: synthetic peptide directed towards the N-terminal region of Human P2RY10. Synthetic peptide located within the following region: NLDKYTETFKMGSNSTSTAEIYCNVTNVKFQYSLYATTYILIFIPGLLAN
Formulation:	Liquid. Purified antibody supplied in 1x PBS buffer with 0.09% (w/v) sodium azide and 2% sucrose. <i>Note that this product is shipped as lyophilized powder to China customers.</i>
Conjugation:	Unconjugated
Storage:	Store at -20°C as received.
Stability:	Stable for 12 months from date of receipt.
Predicted Protein Size:	37 kDa
Gene Name:	purinergic receptor P2Y10
Database Link:	NP_055314 Entrez Gene 27334 Human O00398
Background:	The protein encoded by this gene belongs to the family of G-protein coupled receptors, that are preferentially activated by adenosine and uridine nucleotides. Two alternatively spliced transcript variants encoding the same protein isoform have been found for this gene.
Synonyms:	LYPSR2; P2Y10
Note:	Immunogen sequence homology: Rat: 100%; Human: 100%; Mouse: 86%
Protein Families:	Druggable Genome, GPCR, Transmembrane



[View online »](#)

Protein Pathways: Neuroactive ligand-receptor interaction

Product images:



Host: Rabbit; Target Name: P2RY10; Sample Tissue: HepG2 Whole Cell lysates; Antibody Dilution: 1.0ug/ml