

Product datasheet for **TA331974**

MICAL2 Rabbit Polyclonal Antibody

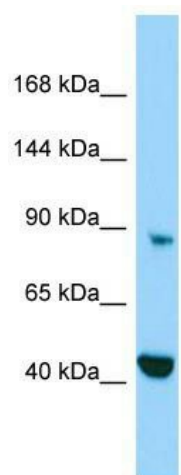
Product data:

Product Type:	Primary Antibodies
Applications:	WB
Recommended Dilution:	WB
Reactivity:	Human
Host:	Rabbit
Isotype:	IgG
Clonality:	Polyclonal
Immunogen:	The immunogen for Anti-MICAL2 Antibody is: synthetic peptide directed towards the C-terminal region of Human MICAL2. Synthetic peptide located within the following region: GKFYCKPHFIHCKTNSKQRKRAELKQQREEEATWQEAPRRDTPTESS
Formulation:	Liquid. Purified antibody supplied in 1x PBS buffer with 0.09% (w/v) sodium azide and 2% sucrose.
Purification:	Affinity Purified
Conjugation:	Unconjugated
Storage:	Store at -20°C as received.
Stability:	Stable for 12 months from date of receipt.
Predicted Protein Size:	86 kDa
Gene Name:	microtubule associated monooxygenase, calponin and LIM domain containing 2
Database Link:	NP_055447 Entrez Gene 9645 Human O94851
Background:	Monooxygenase that promotes depolymerization of F-actin by mediating oxidation of specific methionine residues on actin. It acts by modifying actin subunits through the addition of oxygen to form methionine-sulfoxide, leading to promote actin filament severing and prevent repolymerization.
Synonyms:	MICAL-2; MICAL2PV1; MICAL2PV2
Note:	Immunogen sequence homology: Human: 100%; Rabbit: 100%; Dog: 93%; Pig: 93%; Rat: 93%; Mouse: 93%; Bovine: 93%; Horse: 79%; Guinea pig: 79%



[View online »](#)

Product images:



Host: Rabbit; Target Name: MICAL2; Sample
Tissue: HepG2 Whole Cell lysates; Antibody
Dilution: 1.0ug/ml