

Product datasheet for **TA331973**

CCDC144A Rabbit Polyclonal Antibody

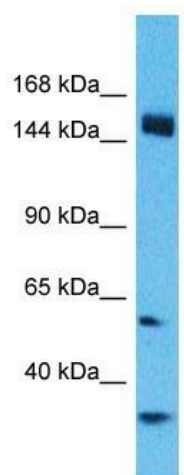
Product data:

Product Type:	Primary Antibodies
Applications:	WB
Recommended Dilution:	WB
Reactivity:	Human
Host:	Rabbit
Isotype:	IgG
Clonality:	Polyclonal
Immunogen:	The immunogen for Anti-CCDC144A Antibody is: synthetic peptide directed towards the C-terminal region of Human CCDC144A. Synthetic peptide located within the following region: TELERYKELYLEEVKRVRESLSNELSRTNEMIAEVSTQLTVEKEQTRSRSL
Formulation:	Liquid. Purified antibody supplied in 1x PBS buffer with 0.09% (w/v) sodium azide and 2% sucrose.
Conjugation:	Unconjugated
Storage:	Store at -20°C as received.
Stability:	Stable for 12 months from date of receipt.
Predicted Protein Size:	156 kDa
Gene Name:	coiled-coil domain containing 144A
Database Link:	NP_055510 Entrez Gene 9720 Human A2RUR9
Background:	The function of this protein remains unknown.
Synonyms:	FLJ43983; KIAA0565; MGC164650
Note:	Immunogen sequence homology: Human: 100%



[View online »](#)

Product images:



Host: Rabbit
Target Name: CCDC144A
Sample Tissue: HeLa Cell Lysate
Antibody Dilution: 1.0 μ g/ml

Host: Rabbit; Target Name: CCDC144A; Sample
Tissue: HeLa Whole cell lysates; Antibody Dilution:
1.0ug/ml