

## Product datasheet for **TA331972**

### TBKBP1 Rabbit Polyclonal Antibody

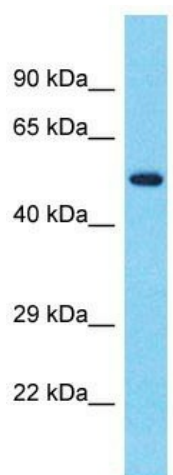
#### Product data:

Product Type:	Primary Antibodies
Applications:	WB
Recommended Dilution:	WB
Reactivity:	Human
Host:	Rabbit
Isotype:	IgG
Clonality:	Polyclonal
Immunogen:	The immunogen for Anti-TBKBP1 Antibody is: synthetic peptide directed towards the N-terminal region of Human TBKBP1. Synthetic peptide located within the following region: ELQKNKEQEEQLGEMIQAYEKLCVEKSDLELREMRALVETHLRQICGL
Formulation:	Liquid. Purified antibody supplied in 1x PBS buffer with 0.09% (w/v) sodium azide and 2% sucrose. <i>Note that this product is shipped as lyophilized powder to China customers.</i>
Conjugation:	Unconjugated
Storage:	Store at -20°C as received.
Stability:	Stable for 12 months from date of receipt.
Predicted Protein Size:	50 kDa
Gene Name:	TBK1 binding protein 1
Database Link:	<a href="#">NP_055541</a> <a href="#">Entrez Gene 9755 Human</a> <a href="#">A7MCY6</a>
Background:	The function of this protein remains unknown.
Synonyms:	ProSAPiP2; SINTBAD
Note:	Immunogen sequence homology: Dog: 100%; Pig: 100%; Rat: 100%; Horse: 100%; Human: 100%; Bovine: 100%; Mouse: 93%; Rabbit: 93%; Zebrafish: 83%
Protein Pathways:	RIG-I-like receptor signaling pathway



[View online »](#)

## Product images:



Host: Rabbit  
Target Name: TBKBP1  
Sample Tissue: Fetal Lung Lysate  
Antibody Dilution: 1.0 $\mu$ g/ml

Host: Rabbit; Target Name: TBKBP1; Sample Tissue: Fetal Lung lysates; Antibody Dilution: 1.0ug/ml