

## Product datasheet for **TA331970**

### IST1 Rabbit Polyclonal Antibody

#### Product data:

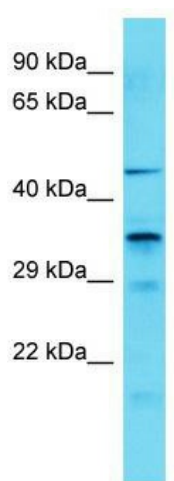
Product Type:	Primary Antibodies
Applications:	WB
Recommended Dilution:	WB
Reactivity:	Human
Host:	Rabbit
Isotype:	IgG
Clonality:	Polyclonal
Immunogen:	The immunogen for Anti-IST1 Antibody is: synthetic peptide directed towards the C-terminal region of Human IST1. Synthetic peptide located within the following region: TDLIDVGFTDDVKKGGPGRGGSGGFTAPVGGPDGTVPMMPMPMPMSANTP
Formulation:	Liquid. Purified antibody supplied in 1x PBS buffer with 0.09% (w/v) sodium azide and 2% sucrose. <i>Note that this product is shipped as lyophilized powder to China customers.</i>
Purification:	Affinity Purified
Conjugation:	Unconjugated
Storage:	Store at -20°C as received.
Stability:	Stable for 12 months from date of receipt.
Predicted Protein Size:	36 kDa
Gene Name:	IST1, ESCRT-III associated factor
Database Link:	<a href="#">NP_055576</a> <a href="#">Entrez Gene 9798 Human</a> <a href="#">P53990</a>
Background:	IST1 is proposed to be involved in specific functions of the ESCRT machinery. It is required for efficient abscission during cytokinesis, but not for HIV-1 budding. The involvement in the MVB pathway is not established. IST1 is involved in recruiting VPS4A and/or VPS4B to the midbody of dividing cells.
Synonyms:	OLC1



[View online »](#)

**Note:** Immunogen sequence homology: Human: 100%; Rat: 93%; Mouse: 93%; Bovine: 93%; Rabbit: 93%; Pig: 92%; Horse: 92%; Guinea pig: 92%; Dog: 86%

### Product images:



Host: Rabbit; Target Name: IST1; Sample Tissue: COLO205 Whole Cell lysates; Antibody Dilution: 1.0ug/ml; IST1 is supported by BioGPS gene expression data to be expressed in COLO205