

## Product datasheet for **TA331969**

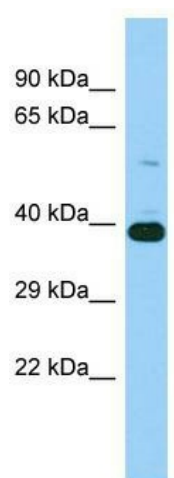
### IST1 Rabbit Polyclonal Antibody

#### Product data:

Product Type:	Primary Antibodies
Applications:	WB
Recommended Dilution:	WB
Reactivity:	Human
Host:	Rabbit
Isotype:	IgG
Clonality:	Polyclonal
Immunogen:	The immunogen for Anti-IST1 Antibody is: synthetic peptide directed towards the N-terminal region of Human IST1. Synthetic peptide located within the following region: INRLKLEKKKTELAQKARKEIADYLAAGKDERARIRVEHIREDYLVEA
Formulation:	Liquid. Purified antibody supplied in 1x PBS buffer with 0.09% (w/v) sodium azide and 2% sucrose. <i>Note that this product is shipped as lyophilized powder to China customers.</i>
Conjugation:	Unconjugated
Storage:	Store at -20°C as received.
Stability:	Stable for 12 months from date of receipt.
Predicted Protein Size:	40 kDa
Gene Name:	IST1, ESCRT-III associated factor
Database Link:	<a href="#">NP_055576</a> <a href="#">Entrez Gene 9798 Human P53990</a>
Background:	IST1 is proposed to be involved in specific functions of the ESCRT machinery. It is required for efficient abscission during cytokinesis, but not for HIV-1 budding. The involvement in the MVB pathway is not established. IST1 is involved in recruiting VPS4A and/or VPS4B to the midbody of dividing cells.
Synonyms:	OLC1
Note:	Immunogen sequence homology: Dog: 100%; Pig: 100%; Rat: 100%; Horse: 100%; Human: 100%; Mouse: 100%; Bovine: 100%; Rabbit: 100%; Zebrafish: 100%; Guinea pig: 100%



[View online »](#)

**Product images:**

Host: Rabbit; Target Name: IST1; Sample Tissue: Fetal Heart lysates; Antibody Dilution: 1.0ug/ml