

Product datasheet for TA331968

ZC3H13 Rabbit Polyclonal Antibody

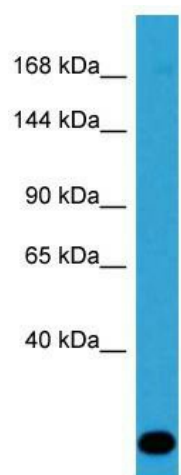
Product data:

Product Type:	Primary Antibodies
Applications:	WB
Recommended Dilution:	WB
Reactivity:	Human
Host:	Rabbit
Isotype:	IgG
Clonality:	Polyclonal
Immunogen:	The immunogen for Anti-ZC3H13 Antibody is: synthetic peptide directed towards the C-terminal region of Human ZC3H13. Synthetic peptide located within the following region: GSGAGEGYEPISDDELDEILAGDAEKREDQQDEEKMPDPLDVIDVDWSGL
Formulation:	Liquid. Purified antibody supplied in 1x PBS buffer with 0.09% (w/v) sodium azide and 2% sucrose.
Conjugation:	Unconjugated
Storage:	Store at -20°C as received.
Stability:	Stable for 12 months from date of receipt.
Predicted Protein Size:	172 kDa
Gene Name:	zinc finger CCCH-type containing 13
Database Link:	NP_055885 Entrez Gene 23091 Human Q5T200
Background:	The function of this protein remains unknown.
Synonyms:	KIAA0853
Note:	Immunogen sequence homology: Dog: 100%; Pig: 100%; Human: 100%; Bovine: 100%; Rabbit: 100%; Rat: 93%; Horse: 93%; Mouse: 93%; Guinea pig: 93%; Yeast: 82%



[View online »](#)

Product images:



Host: Rabbit; Target Name: ZC3H13; Sample
Tissue: Jurkat Whole Cell lysates; Antibody
Dilution: 1.0ug/ml