

Product datasheet for TA331967

HIC2 Rabbit Polyclonal Antibody

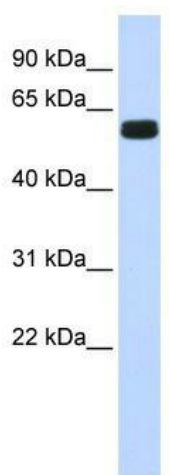
Product data:

Product Type:	Primary Antibodies
Applications:	WB
Recommended Dilution:	WB
Reactivity:	Human
Host:	Rabbit
Isotype:	IgG
Clonality:	Polyclonal
Immunogen:	The immunogen for Anti-HIC2 Antibody: synthetic peptide directed towards the middle region of human HIC2. Synthetic peptide located within the following region: KSPPLPPATPGPHLTPDDAAQLSDSQHGSPPAASAPPVANSASYSSELGGT
Formulation:	Liquid. Purified antibody supplied in 1x PBS buffer with 0.09% (w/v) sodium azide and 2% sucrose. <i>Note that this product is shipped as lyophilized powder to China customers.</i>
Conjugation:	Unconjugated
Storage:	Store at -20°C as received.
Stability:	Stable for 12 months from date of receipt.
Predicted Protein Size:	66 kDa
Gene Name:	hypermethylated in cancer 2
Database Link:	NP_055909 Entrez Gene 23119 Human Q96JB3
Background:	HIC2 belongs to the krueppel C2H2-type zinc-finger protein family.
Synonyms:	HRG22; ZBTB30; ZNF907
Note:	Immunogen sequence homology: Human: 100%; Rabbit: 93%; Dog: 86%; Rat: 86%; Horse: 86%; Mouse: 86%; Bovine: 86%; Pig: 85%; Guinea pig: 85%
Protein Families:	Transcription Factors

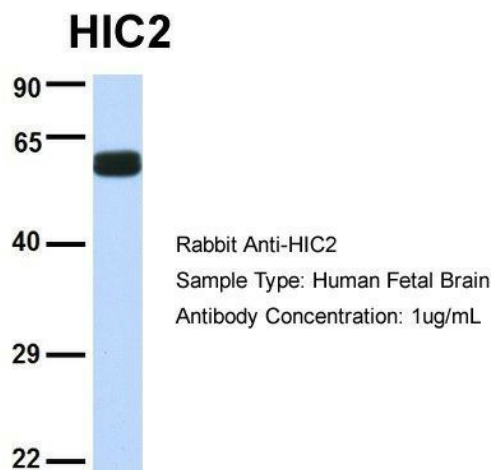


[View online »](#)

Product images:



WB Suggested Anti-HIC2 Antibody Titration: 0.2-1 ug/ml; ELISA Titer: 1: 62500; Positive Control: Human brain



Host: Rabbit; Target Name: HIC2; Sample Tissue: Human Fetal Brain; Antibody Dilution: 1.0ug/ml