

Product datasheet for TA331965

PMPCA Rabbit Polyclonal Antibody

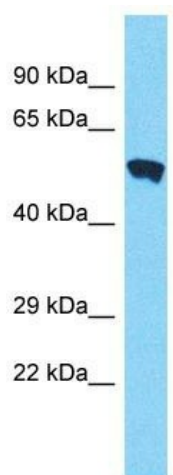
Product data:

Product Type:	Primary Antibodies
Applications:	WB
Recommended Dilution:	WB
Reactivity:	Human
Host:	Rabbit
Isotype:	IgG
Clonality:	Polyclonal
Immunogen:	The immunogen for Anti-PMPCA Antibody is: synthetic peptide directed towards the C-terminal region of Human PMPCA. Synthetic peptide located within the following region: IRNVKPEDVKRVASKMLRGKPAVAALGDLTDLPTYEHIQTALSSKDGRLP
Formulation:	Liquid. Purified antibody supplied in 1x PBS buffer with 0.09% (w/v) sodium azide and 2% sucrose. <i>Note that this product is shipped as lyophilized powder to China customers.</i>
Conjugation:	Unconjugated
Storage:	Store at -20°C as received.
Stability:	Stable for 12 months from date of receipt.
Predicted Protein Size:	54 kDa
Gene Name:	peptidase, mitochondrial processing alpha subunit
Database Link:	NP_055975 Entrez Gene 23203 Human Q10713
Background:	PMPCA cleaves presequences (transit peptides) from mitochondrial protein precursors.
Synonyms:	Alpha-MPP; INPP5E; P-55; SCAR2
Note:	Immunogen sequence homology: Human: 100%; Rat: 93%; Mouse: 93%; Horse: 92%; Bovine: 86%; Pig: 79%; Guinea pig: 79%; Dog: 77%
Protein Families:	Druggable Genome, Protease



[View online »](#)

Product images:



Host: Rabbit
Target Name: PMPCA
Sample Tissue: MCF7 Cell Lysate
Antibody Dilution: 1.0µg/ml

Host: Rabbit; Target Name: PMPCA; Sample Tissue: MCF7 Whole Cell lysates; Antibody Dilution: 1.0ug/ml; PMPCA is supported by BioGPS gene expression data to be expressed in MCF7