

Product datasheet for TA331964

DTX4 Rabbit Polyclonal Antibody

Product data:

| | |
|-------------------------|--|
| Product Type: | Primary Antibodies |
| Applications: | WB |
| Recommended Dilution: | WB |
| Reactivity: | Human |
| Host: | Rabbit |
| Isotype: | IgG |
| Clonality: | Polyclonal |
| Immunogen: | The immunogen for Anti-DTX4 Antibody is: synthetic peptide directed towards the C-terminal region of Human DTX4. Synthetic peptide located within the following region: LPVCLTRPPKLVLHPPPVSKEIKSIPGVSNTSRKTTKKQAKKGKTPEEV |
| Formulation: | Liquid. Purified antibody supplied in 1x PBS buffer with 0.09% (w/v) sodium azide and 2% sucrose. <i>Note that this product is shipped as lyophilized powder to China customers.</i> |
| Conjugation: | Unconjugated |
| Storage: | Store at -20°C as received. |
| Stability: | Stable for 12 months from date of receipt. |
| Predicted Protein Size: | 67 kDa |
| Gene Name: | deltex 4, E3 ubiquitin ligase |
| Database Link: | NP_055992 Entrez Gene 23220 Human Q9Y2E6 |
| Background: | DTX4 is a regulator of Notch signaling, a signaling pathway involved in cell-cell communications that regulates a broad spectrum of cell-fate determinations. It functions as an ubiquitin ligase protein in vivo, mediating 'Lys48'-linked polyubiquitination and promoting degradation of TBK1, targeting to TBK1 requires interaction with NLRP4. |
| Synonyms: | RNF155 |
| Note: | Immunogen sequence homology: Dog: 100%; Pig: 100%; Rat: 100%; Horse: 100%; Human: 100%; Mouse: 100%; Bovine: 100%; Rabbit: 100%; Guinea pig: 100%; Zebrafish: 93% |

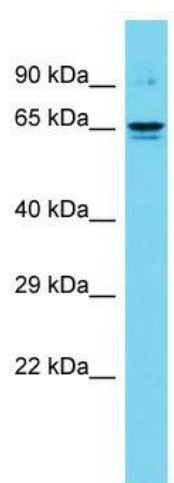


[View online »](#)

Protein Families: Druggable Genome

Protein Pathways: Notch signaling pathway

Product images:



Host: Rabbit; Target Name: DTX4; Sample Tissue: Fetal Kidney lysates; Antibody Dilution: 1.0ug/ml