

Product datasheet for **TA331963**

DTX4 Rabbit Polyclonal Antibody

Product data:

Product Type:	Primary Antibodies
Applications:	WB
Recommended Dilution:	WB
Reactivity:	Human
Host:	Rabbit
Isotype:	IgG
Clonality:	Polyclonal
Immunogen:	The immunogen for Anti-DTX4 Antibody is: synthetic peptide directed towards the C-terminal region of Human DTX4. Synthetic peptide located within the following region: TVIWNEVHHKTEFGSNLTGHGYPDANYLDNVLAELAAQGI SEDSTAQEKD
Formulation:	Liquid. Purified antibody supplied in 1x PBS buffer with 0.09% (w/v) sodium azide and 2% sucrose. <i>Note that this product is shipped as lyophilized powder to China customers.</i>
Conjugation:	Unconjugated
Storage:	Store at -20°C as received.
Stability:	Stable for 12 months from date of receipt.
Predicted Protein Size:	67 kDa
Gene Name:	deltex 4, E3 ubiquitin ligase
Database Link:	NP_055992 Entrez Gene 23220 Human Q9Y2E6
Background:	DTX4 is a regulator of Notch signaling, a signaling pathway involved in cell-cell communications that regulates a broad spectrum of cell-fate determinations. It functions as an ubiquitin ligase protein in vivo, mediating 'Lys48'-linked polyubiquitination and promoting degradation of TBK1, targeting to TBK1 requires interaction with NLRP4.
Synonyms:	RNF155
Note:	Immunogen sequence homology: Dog: 100%; Pig: 100%; Horse: 100%; Human: 100%; Guinea pig: 100%; Rat: 93%; Bovine: 93%; Mouse: 86%; Rabbit: 86%

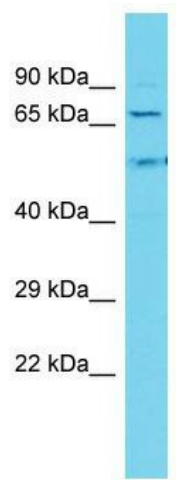


[View online »](#)

Protein Families: Druggable Genome

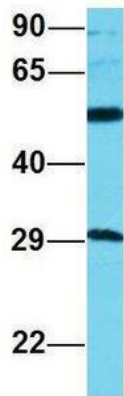
Protein Pathways: Notch signaling pathway

Product images:



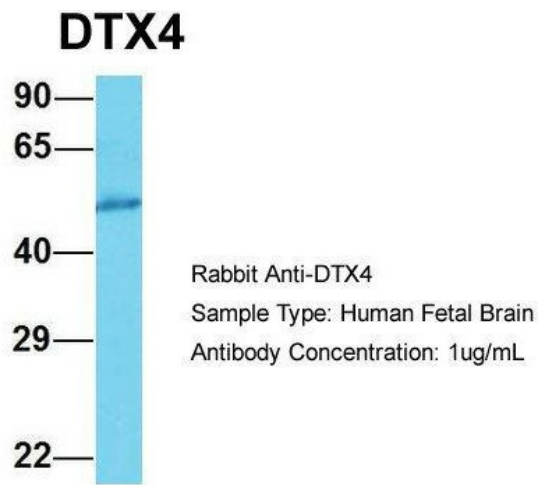
Host: Rabbit; Target Name: DTX4; Sample Tissue: Fetal Liver lysates; Antibody Dilution: 1.0ug/ml

DTX4



Rabbit Anti-DTX4
Sample Type: Human Adult Placenta
Antibody Concentration: 1ug/mL

Host: Rabbit; Target Name: DTX4; Sample Tissue: Human Adult Placenta; Antibody Dilution: 1.0ug/ml



Host: Rabbit; Target Name: DTX4; Sample Tissue: Human Fetal Brain; Antibody Dilution: 1.0ug/ml