

## Product datasheet for TA331961

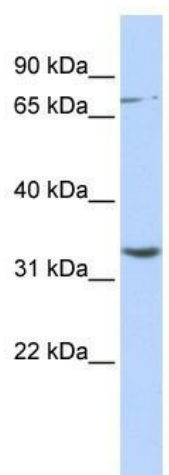
### DPY19L1 Rabbit Polyclonal Antibody

#### Product data:

Product Type:	Primary Antibodies
Applications:	WB
Recommended Dilution:	WB
Reactivity:	Human
Host:	Rabbit
Isotype:	IgG
Clonality:	Polyclonal
Immunogen:	The immunogen for Anti-DPY19L1 Antibody: synthetic peptide directed towards the N terminal of human DPY19L1. Synthetic peptide located within the following region: WSHITHLFENDRHFSLSTLEREMAFRTEMGLYYSYFKTIVEAPSFLNGV
Formulation:	Liquid. Purified antibody supplied in 1x PBS buffer with 0.09% (w/v) sodium azide and 2% sucrose.
Conjugation:	Unconjugated
Storage:	Store at -20°C as received.
Stability:	Stable for 12 months from date of receipt.
Predicted Protein Size:	77 kDa
Gene Name:	dpy-19 like 1 (C. elegans)
Database Link:	<a href="#">NP_056098</a> <a href="#">Entrez Gene 23333 Human</a> <a href="#">Q2PZ11</a>
Background:	The specific function of DPY19L1 is not yet known.
Synonyms:	KIAA0877
Note:	Immunogen sequence homology: Pig: 100%; Rat: 100%; Horse: 100%; Human: 100%; Mouse: 100%; Bovine: 100%; Guinea pig: 100%; Dog: 93%; Rabbit: 93%; Zebrafish: 92%
Protein Families:	Transmembrane



[View online »](#)

**Product images:**

WB Suggested Anti-DPY19L1 Antibody Titration:  
0.2-1 ug/ml; ELISA Titer: 1: 1562500; Positive  
Control: Jurkat cell lysate