

## Product datasheet for **TA331959**

### RRP8 Rabbit Polyclonal Antibody

#### Product data:

Product Type:	Primary Antibodies
Applications:	WB
Recommended Dilution:	WB
Reactivity:	Human
Host:	Rabbit
Isotype:	IgG
Clonality:	Polyclonal
Immunogen:	The immunogen for Anti-RRP8 Antibody is: synthetic peptide directed towards the N-terminal region of Human RRP8. Synthetic peptide located within the following region: GKKGKKKCQKQGPPCSDSEEEVERKKKCHKQALVGSDSAEDKRRKRCQK
Formulation:	Liquid. Purified antibody supplied in 1x PBS buffer with 0.09% (w/v) sodium azide and 2% sucrose. <i>Note that this product is shipped as lyophilized powder to China customers.</i>
Conjugation:	Unconjugated
Storage:	Store at -20°C as received.
Stability:	Stable for 12 months from date of receipt.
Predicted Protein Size:	50 kDa
Gene Name:	ribosomal RNA processing 8, methyltransferase, homolog (yeast)
Database Link:	<a href="#">NP_056139</a> <a href="#">Entrez Gene 23378 Human</a> <a href="#">O43159</a>
Background:	RRP8 is an essential component of the eNoSC (energy-dependent nucleolar silencing) complex, a complex that mediates silencing of rDNA in response to intracellular energy status and acts by recruiting histone-modifying enzymes. The eNoSC complex is able to sense the energy status of cell: upon glucose starvation, elevation of NAD <sup>+</sup> /NADP <sup>+</sup> ratio activates SIRT1, leading to histone H3 deacetylation followed by dimethylation of H3 at 'Lys-9' (H3K9me2) by SUV39H1 and the formation of silent chromatin in the rDNA locus. In the complex, RRP8 binds to H3K9me2 and probably acts as a methyltransferase. Its substrates are however unknown.

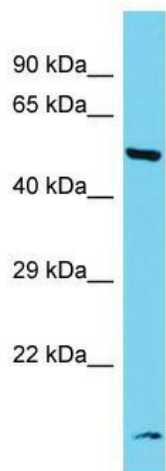


[View online »](#)

**Synonyms:** KIAA0409; NML

**Note:** Immunogen sequence homology: Human: 100%; Rat: 93%; Horse: 85%; Rabbit: 85%; Bovine: 83%

**Product images:**



Host: Rabbit; Target Name: RRP8; Sample Tissue: Fetal Kidney lysates; Antibody Dilution: 1.0ug/ml