

## Product datasheet for **TA331958**

### LEPROTL1 Rabbit Polyclonal Antibody

#### Product data:

Product Type:	Primary Antibodies
Applications:	WB
Recommended Dilution:	WB
Reactivity:	Human
Host:	Rabbit
Isotype:	IgG
Clonality:	Polyclonal
Immunogen:	The immunogen for Anti-LEPROTL1 Antibody is: synthetic peptide directed towards the N-terminal region of Human LEPROTL1. Synthetic peptide located within the following region: FVLFFYILSPIPYCIARRLVDDTDAMS NACKELAIFLTGGIVVSAFGLPI
Formulation:	Liquid. Purified antibody supplied in 1x PBS buffer with 0.09% (w/v) sodium azide and 2% sucrose.
Conjugation:	Unconjugated
Storage:	Store at -20°C as received.
Stability:	Stable for 12 months from date of receipt.
Predicted Protein Size:	14 kDa
Gene Name:	leptin receptor overlapping transcript-like 1
Database Link:	<a href="#">NP_056159</a> <a href="#">Entrez Gene 23484 Human</a> <a href="#">O95214</a>
Background:	LEPROTL1 negatively regulates growth hormone (GH) receptor cell surface expression in liver. It may play a role in liver resistance to GH during periods of reduced nutrient availability.
Synonyms:	HSPC112; my047; Vps55
Note:	Immunogen sequence homology: Dog: 100%; Pig: 100%; Rat: 100%; Horse: 100%; Human: 100%; Mouse: 100%; Bovine: 100%; Rabbit: 100%; Guinea pig: 100%; Goat: 86%
Protein Families:	Druggable Genome, Transmembrane



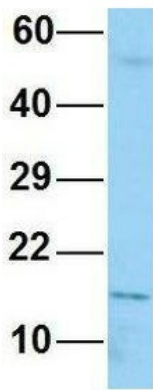
[View online »](#)

**Product images:**



Host: Rabbit; Target Name: LEPROTL1; Sample Tissue: Fetal Liver lysates; Antibody Dilution: 1.0ug/ml

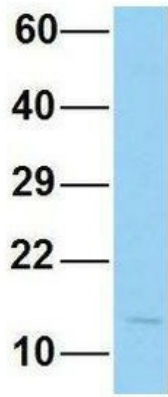
**LEPROTL1**



Rabbit Anti-LEPROTL1  
Sample Type: Human HepG2  
Antibody Concentration: 1ug/mL

Host: Rabbit; Target Name: LEPROTL1; Sample Tissue: Human HepG2; Antibody Dilution: 1.0ug/ml; LEPROTL1 is strongly supported by BioGPS gene expression data to be expressed in Human HepG2 cells

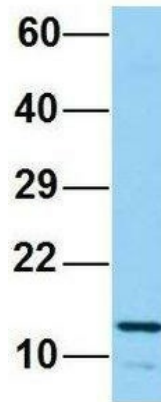
## LEPROTL1



Rabbit Anti-LEPROTL1  
Sample Type: Human 721\_B  
Antibody Concentration: 1ug/mL

Host: Rabbit; Target Name: LEPROTL1; Sample Tissue: Human 721\_B; Antibody Dilution: 1.0ug/ml; LEPROTL1 is supported by BioGPS gene expression data to be expressed in 721\_B

## LEPROTL1



Rabbit Anti-LEPROTL1  
Sample Type: Human HeLa  
Antibody Concentration: 1ug/mL

Host: Rabbit; Target Name: LEPROTL1; Sample Tissue: Human HeLa; Antibody Dilution: 1.0ug/ml; LEPROTL1 is supported by BioGPS gene expression data to be expressed in HeLa