

Product datasheet for **TA331956**

SAMM50 Rabbit Polyclonal Antibody

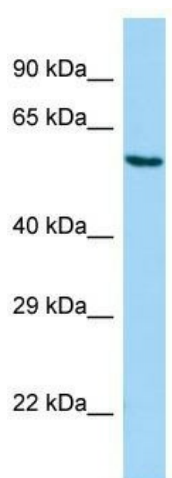
Product data:

Product Type:	Primary Antibodies
Applications:	WB
Recommended Dilution:	WB
Reactivity:	Human
Host:	Rabbit
Isotype:	IgG
Clonality:	Polyclonal
Immunogen:	The immunogen for Anti-SAMM50 Antibody is: synthetic peptide directed towards the N-terminal region of Human SAMM50. Synthetic peptide located within the following region: GLGRTKDDIIICEIGDVFKAKNLIEVMRKSHEAREKLLRLGIFRQVDVLI
Formulation:	Liquid. Purified antibody supplied in 1x PBS buffer with 0.09% (w/v) sodium azide and 2% sucrose. <i>Note that this product is shipped as lyophilized powder to China customers.</i>
Conjugation:	Unconjugated
Storage:	Store at -20°C as received.
Stability:	Stable for 12 months from date of receipt.
Predicted Protein Size:	52 kDa
Gene Name:	SAMM50 sorting and assembly machinery component
Database Link:	NP_056195 Entrez Gene 25813 Human Q9Y512
Background:	This gene encodes a component of the Sorting and Assembly Machinery (SAM) of the mitochondrial outer membrane. The Sam complex functions in the assembly of beta-barrel proteins into the outer mitochondrial membrane.
Synonyms:	CGI-51; OMP85; SAM50; TOB55; TRG-3; YNL026W
Note:	Immunogen sequence homology: Dog: 100%; Pig: 100%; Rat: 100%; Human: 100%; Bovine: 100%; Rabbit: 100%; Guinea pig: 100%; Mouse: 93%; Horse: 88%; Zebrafish: 85%



[View online »](#)

Product images:



Host: Rabbit; Target Name: SAMM50; Sample
Tissue: A549 Whole Cell lysates; Antibody
Dilution: 1.0ug/ml