

Product datasheet for **TA331955**

ABHD14A Rabbit Polyclonal Antibody

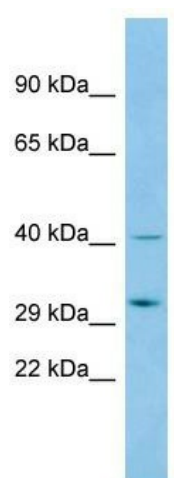
Product data:

Product Type:	Primary Antibodies
Applications:	IHC, WB
Recommended Dilution:	IHC, WB
Reactivity:	Human
Host:	Rabbit
Isotype:	IgG
Clonality:	Polyclonal
Immunogen:	The immunogen for Anti-ABHD14A Antibody is: synthetic peptide directed towards the C-terminal region of Human ABHD14A. Synthetic peptide located within the following region: IAPTSTQNYTQEQFWAVKTPTLILYGELDHILARESRLRHLRPNHSSVK
Formulation:	Liquid. Purified antibody supplied in 1x PBS buffer with 0.09% (w/v) sodium azide and 2% sucrose. <i>Note that this product is shipped as lyophilized powder to China customers.</i>
Conjugation:	Unconjugated
Storage:	Store at -20°C as received.
Stability:	Stable for 12 months from date of receipt.
Predicted Protein Size:	30 kDa
Gene Name:	abhydrolase domain containing 14A
Database Link:	NP_056222 Entrez Gene 25864 Human Q9BUJ0
Background:	ABHD14A play a possible role in granule neuron development.
Synonyms:	DORZ1
Note:	Immunogen sequence homology: Human: 100%; Dog: 93%; Pig: 93%; Horse: 93%; Bovine: 93%; Rat: 86%; Mouse: 86%; Guinea pig: 79%

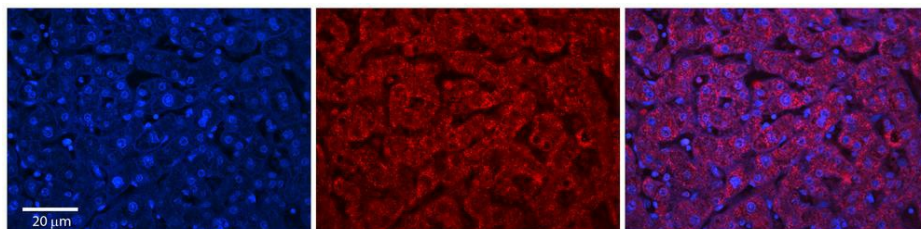


[View online »](#)

Product images:



Host: Rabbit; Target Name: ABHD14A; Sample Tissue: 293T Whole Cell lysates; Antibody Dilution: 1.0ug/ml; ABHD14A is supported by BioGPS gene expression data to be expressed in HEK293T



Rabbit Anti-ABHD14A Antibody; Formalin Fixed Paraffin Embedded Tissue: Human Adult Liver; Observed Staining: Cytoplasm in hepatocytes, strong signal, wide tissue distribution; Primary Antibody Concentration: 1: 100; Secondary Antibody: Donkey anti-Rabbit-