

Product datasheet for **TA331950**

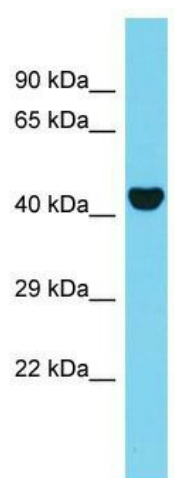
C20orf4 (AAR2) Rabbit Polyclonal Antibody

Product data:

Product Type:	Primary Antibodies
Applications:	WB
Recommended Dilution:	WB
Reactivity:	Human
Host:	Rabbit
Isotype:	IgG
Clonality:	Polyclonal
Immunogen:	The immunogen for Anti-AAR2 Antibody is: synthetic peptide directed towards the N-terminal region of Human AAR2. Synthetic peptide located within the following region: KFRGVKMIPPGIHFLHYSSVDKANPKEVGPRMGFFLSLHQRLTVLRWST
Formulation:	Liquid. Purified antibody supplied in 1x PBS buffer with 0.09% (w/v) sodium azide and 2% sucrose. <i>Note that this product is shipped as lyophilized powder to China customers.</i>
Conjugation:	Unconjugated
Storage:	Store at -20°C as received.
Stability:	Stable for 12 months from date of receipt.
Predicted Protein Size:	42 kDa
Gene Name:	AAR2 splicing factor homolog
Database Link:	NP_056326 Entrez Gene 25980 Human Q9Y312
Background:	The function of this protein remains unknown.
Synonyms:	C20orf4; CGI-23
Note:	Immunogen sequence homology: Human: 100%; Dog: 93%; Rat: 93%; Horse: 93%; Mouse: 93%; Bovine: 93%; Pig: 86%; Rabbit: 86%; Guinea pig: 86%



[View online »](#)

Product images:

Host: Rabbit; Target Name: AAR2; Sample Tissue: 721_B Whole Cell lysates; Antibody Dilution: 1.0ug/ml. AAR2 is supported by BioGPS gene expression data to be expressed in 721_B