

## Product datasheet for **TA331949**

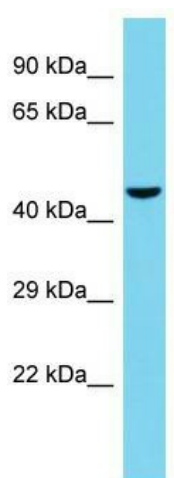
### Tsukushin (TSKU) Rabbit Polyclonal Antibody

#### Product data:

Product Type:	Primary Antibodies
Applications:	WB
Recommended Dilution:	WB
Reactivity:	Human
Host:	Rabbit
Isotype:	IgG
Clonality:	Polyclonal
Immunogen:	The immunogen for Anti-TSKU Antibody is: synthetic peptide directed towards the C-terminal region of Human TSKU. Synthetic peptide located within the following region: ALQSVSVGQDVRRCRLVREGTYPRRPGSSPKVALHCVDTRDSAARGPTIL
Formulation:	Liquid. Purified antibody supplied in 1x PBS buffer with 0.09% (w/v) sodium azide and 2% sucrose. <i>Note that this product is shipped as lyophilized powder to China customers.</i>
Conjugation:	Unconjugated
Storage:	Store at -20°C as received.
Stability:	Stable for 12 months from date of receipt.
Predicted Protein Size:	39 kDa
Gene Name:	tsukushi, small leucine rich proteoglycan
Database Link:	<a href="#">NP_056331</a> <a href="#">Entrez Gene 25987 Human</a> <a href="#">Q8WUA8</a>
Background:	The function of this protein remains unknown.
Synonyms:	E2IG4; LRRC54; TSK
Note:	Immunogen sequence homology: Human: 100%; Mouse: 77%
Protein Families:	Secreted Protein



[View online »](#)

**Product images:**

Host: Rabbit; Target Name: TSKU; Sample Tissue: HepG2 Whole Cell lysates; Antibody Dilution: 1.0ug/ml. TSKU is supported by BioGPS gene expression data to be expressed in HepG2