

Product datasheet for **TA331948**

SPATS2L Rabbit Polyclonal Antibody

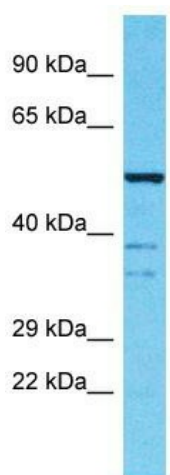
Product data:

Product Type:	Primary Antibodies
Applications:	WB
Recommended Dilution:	WB
Reactivity:	Human
Host:	Rabbit
Isotype:	IgG
Clonality:	Polyclonal
Immunogen:	The immunogen for Anti-SPATS2L Antibody is: synthetic peptide directed towards the N-terminal region of Human SPATS2L. Synthetic peptide located within the following region: VDKAVQAFVDGSAIQVLKEWNMTGKKKNNKRKRSKSKQHQGKNKDAKDKVE
Formulation:	Liquid. Purified antibody supplied in 1x PBS buffer with 0.09% (w/v) sodium azide and 2% sucrose.
Conjugation:	Unconjugated
Storage:	Store at -20°C as received.
Stability:	Stable for 12 months from date of receipt.
Predicted Protein Size:	53 kDa
Gene Name:	spermatogenesis associated serine rich 2 like
Database Link:	NP_056350 Entrez Gene 26010 Human Q9NUQ6
Background:	The function of this protein remains unknown.
Synonyms:	DNATP6; SGNP
Note:	Immunogen sequence homology: Dog: 100%; Rat: 100%; Horse: 100%; Human: 100%; Mouse: 100%; Bovine: 100%; Pig: 93%; Guinea pig: 93%; Rabbit: 86%



[View online »](#)

Product images:



Host: Rabbit
 Target Name: SPATS2L
 Sample Tissue: NCI-H226 Cell Lysate
 Antibody Dilution: 1.0µg/ml

Host: Rabbit; Target Name: SPATS2L; Sample
 Tissue: NCI-H226 Whole Cell lysates; Antibody
 Dilution: 1.0ug/ml