

## Product datasheet for **TA331947**

### SPATS2L Rabbit Polyclonal Antibody

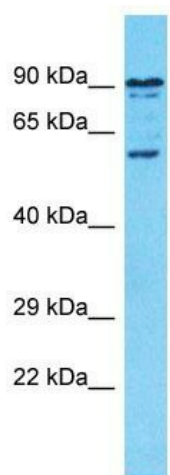
#### Product data:

|                         |  |
|-------------------------|--|
| Product Type:           | Primary Antibodies   |
| Applications:           | WB   |
| Recommended Dilution:   | WB   |
| Reactivity:             | Human  |
| Host:                   | Rabbit   |
| Isotype:                | IgG  |
| Clonality:              | Polyclonal   |
| Immunogen:              | The immunogen for Anti-SPATS2L Antibody is: synthetic peptide directed towards the C-terminal region of Human SPATS2L. Synthetic peptide located within the following region: GNEAEPLGKGNSRHEHRRQPHNGFRPKNKGGAKNQEASLG MKTPEAPAH S |
| Formulation:            | Liquid. Purified antibody supplied in 1x PBS buffer with 0.09% (w/v) sodium azide and 2% sucrose.  |
| Conjugation:            | Unconjugated   |
| Storage:                | Store at -20°C as received.  |
| Stability:              | Stable for 12 months from date of receipt.   |
| Predicted Protein Size: | 61 kDa   |
| Gene Name:              | spermatogenesis associated serine rich 2 like  |
| Database Link:          | <a href="#">NP_056350</a><br><a href="#">Entrez Gene 26010 Human</a><br><a href="#">Q9NUQ6</a>   |
| Background:             | The function of this protein remains unknown.  |
| Synonyms:               | DNATP6; SGNP   |
| Note:                   | Immunogen sequence homology: Dog: 100%; Pig: 100%; Rat: 100%; Human: 100%; Mouse: 100%; Bovine: 100%; Rabbit: 100%; Horse: 85%; Guinea pig: 77%  |



[View online »](#)

## Product images:



Host: Rabbit

Target Name: SPATS2L

Sample Tissue: Hela Cell Lysate

Antibody Dilution: 1.0µg/ml

Host: Rabbit; Target Name: SPATS2L; Sample  
Tissue: Hela Whole Cell lysates; Antibody Dilution:  
1.0ug/ml