

## Product datasheet for **TA331945**

### PLEKHG3 Rabbit Polyclonal Antibody

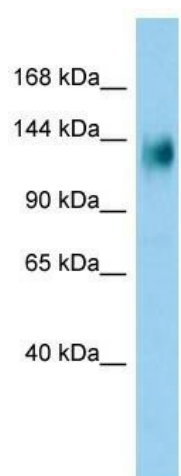
#### Product data:

Product Type:	Primary Antibodies
Applications:	WB
Recommended Dilution:	WB
Reactivity:	Human
Host:	Rabbit
Isotype:	IgG
Clonality:	Polyclonal
Immunogen:	The immunogen for Anti-PLEKHG3 Antibody is: synthetic peptide directed towards the C-terminal region of Human PLEKHG3. Synthetic peptide located within the following region: PGGRPSARSPLSPTETFSWPDVRELCSKYASRDEARRAGGGRRPRGPPVNR
Formulation:	Liquid. Purified antibody supplied in 1x PBS buffer with 0.09% (w/v) sodium azide and 2% sucrose. <i>Note that this product is shipped as lyophilized powder to China customers.</i>
Conjugation:	Unconjugated
Storage:	Store at -20°C as received.
Stability:	Stable for 12 months from date of receipt.
Predicted Protein Size:	128 kDa
Gene Name:	pleckstrin homology and RhoGEF domain containing G3
Database Link:	<a href="#">NP_056364</a> <a href="#">Entrez Gene 26030 Human</a> <a href="#">A1L390</a>
Background:	The function of this protein remains unknown.
Synonyms:	ARHGEF43; KIAA0599
Note:	Immunogen sequence homology: Human: 100%



[View online »](#)

## Product images:



Host: Rabbit; Target Name: PLEKHG3; Sample Tissue: A549 Whole Cell lysates; Antibody Dilution: 1.0ug/ml; PLEKHG3 is strongly supported by BioGPS gene expression data to be expressed in Human A549 cells