

Product datasheet for **TA331944**

SUSD5 Rabbit Polyclonal Antibody

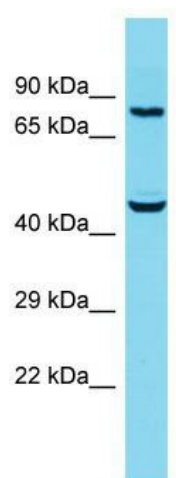
Product data:

Product Type:	Primary Antibodies
Applications:	WB
Recommended Dilution:	WB
Reactivity:	Human
Host:	Rabbit
Isotype:	IgG
Clonality:	Polyclonal
Immunogen:	The immunogen for Anti-SUSD5 Antibody is: synthetic peptide directed towards the middle region of Human SUSD5. Synthetic peptide located within the following region: PGLEKEVDDDTKKQFSAGDNHSGVKLVPGEPETKVIYGNTDGPSPGPFVKG
Formulation:	Liquid. Purified antibody supplied in 1x PBS buffer with 0.09% (w/v) sodium azide and 2% sucrose.
Conjugation:	Unconjugated
Storage:	Store at -20°C as received.
Stability:	Stable for 12 months from date of receipt.
Predicted Protein Size:	69 kDa
Gene Name:	sushi domain containing 5
Database Link:	NP_056366 Entrez Gene 26032 Human O60279
Background:	The function of this protein remains unknown.
Synonyms:	KIAA0527
Note:	Immunogen sequence homology: Human: 100%; Rat: 86%; Horse: 79%
Protein Families:	Transmembrane



[View online »](#)

Product images:



Host: Rabbit; Target Name: SUSD5; Sample
Tissue: PANC1 Whole Cell lysates; Antibody
Dilution: 1.0ug/ml