

## Product datasheet for **TA331940**

### ABCA12 Rabbit Polyclonal Antibody

#### Product data:

Product Type:	Primary Antibodies
Applications:	WB
Recommended Dilution:	WB
Reactivity:	Human
Host:	Rabbit
Isotype:	IgG
Clonality:	Polyclonal
Immunogen:	The immunogen for Anti-ABCA12 Antibody: synthetic peptide directed towards the middle region of human ABCA12. Synthetic peptide located within the following region: TTIFKMLTGDIIIPSSGNILIRNKTGSLGHVDSHSSLVGYCPQEDALDDL
Formulation:	Liquid. Purified antibody supplied in 1x PBS buffer with 0.09% (w/v) sodium azide and 2% sucrose. <i>Note that this product is shipped as lyophilized powder to China customers.</i>
Conjugation:	Unconjugated
Storage:	Store at -20°C as received.
Stability:	Stable for 12 months from date of receipt.
Predicted Protein Size:	257 kDa
Gene Name:	ATP binding cassette subfamily A member 12
Database Link:	<a href="#">NP_056472</a> <a href="#">Entrez Gene 26154 Human</a> <a href="#">Q86UK0</a>
Background:	The membrane-associated protein encoded by this gene is a member of the superfamily of ATP-binding cassette (ABC) transporters. ABC proteins transport various molecules across extra- and intracellular membranes. ABC genes are divided into seven distinct subfamilies (ABC1, MDR/TAP, MRP, ALD, OABP, GCN20, and White). This encoded protein is a member of the ABC1 subfamily, which is the only major ABC subfamily found exclusively in multicellular eukaryotes. Alternative splicing of this gene results in multiple transcript variants. [provided by RefSeq, Jul 2008]



[View online »](#)

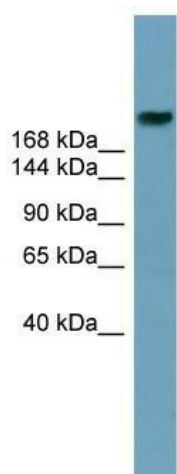
**Synonyms:** ARCI4A; ARCI4B; ICR2B; LI2

**Note:** Immunogen sequence homology: Dog: 100%; Pig: 100%; Horse: 100%; Human: 100%; Rabbit: 100%; Guinea pig: 100%; Rat: 93%; Mouse: 93%; Bovine: 93%

**Protein Families:** Druggable Genome, Transmembrane

**Protein Pathways:** ABC transporters

### Product images:



WB Suggested Anti-ABCA12 Antibody Titration:  
0.2-1 ug/ml; Positive Control: Human Stomach