

Product datasheet for **TA331935**

Pokemon (ZBTB7A) Rabbit Polyclonal Antibody

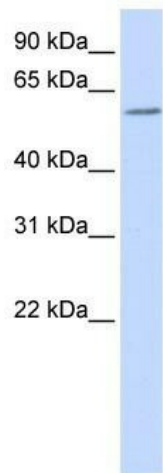
Product data:

Product Type:	Primary Antibodies
Applications:	WB
Recommended Dilution:	WB
Reactivity:	Human
Host:	Rabbit
Isotype:	IgG
Clonality:	Polyclonal
Immunogen:	The immunogen for Anti-ZBTB7A Antibody: synthetic peptide directed towards the N terminal of human ZBTB7A. Synthetic peptide located within the following region: LSAARLLEIPAVSHVCADLLDRQILAADAGADAGQLDLVDQIDQRNLLRA
Formulation:	Liquid. Purified antibody supplied in 1x PBS buffer with 0.09% (w/v) sodium azide and 2% sucrose. <i>Note that this product is shipped as lyophilized powder to China customers.</i>
Conjugation:	Unconjugated
Storage:	Store at -20°C as received.
Stability:	Stable for 12 months from date of receipt.
Predicted Protein Size:	61 kDa
Gene Name:	zinc finger and BTB domain containing 7A
Database Link:	NP_056982 Entrez Gene 51341 Human O95365
Background:	The function of Anti-ZBTB7A has not yet been determined.
Synonyms:	FBI-1; FBI1; LRF; pokemon; TIP21; ZBTB7; ZNF857A
Note:	Immunogen sequence homology: Dog: 100%; Pig: 100%; Rat: 100%; Human: 100%; Mouse: 100%; Bovine: 100%; Zebrafish: 100%; Guinea pig: 100%
Protein Families:	Transcription Factors



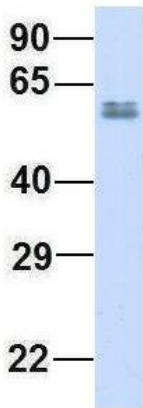
[View online »](#)

Product images:



WB Suggested Anti-ZBTB7A Antibody Titration:
0.2-1 ug/ml; ELISA Titer: 1: 312500; Positive
Control: Hela cell lysate

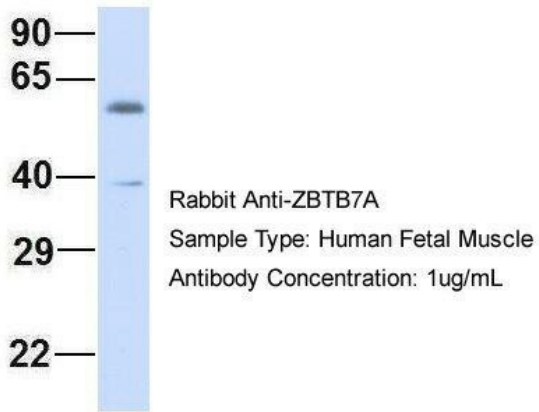
ZBTB7A



Rabbit Anti-ZBTB7A
Sample Type: Human Adult
Placenta
Antibody Concentration: 1ug/mL

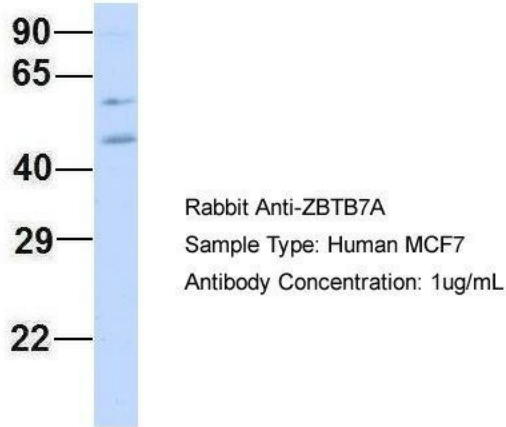
Host: Rabbit; Target Name: ZBTB7A; Sample
Tissue: Human Adult Placenta; Antibody Dilution:
1.0ug/ml

ZBTB7A



Host: Rabbit; Target Name: ZBTB7A; Sample Tissue: Human Fetal Muscle; Antibody Dilution: 1.0ug/ml

ZBTB7A



Host: Rabbit; Target Name: ZBTB7A; Sample Tissue: MCF7; Antibody Dilution: 1.0ug/ml; There is BioGPS gene expression data showing that ZBTB7A is expressed in MCF7