

Product datasheet for **TA331934**

Lipolysis Stimulated Lipoprotein Receptor (LSR) Rabbit Polyclonal Antibody

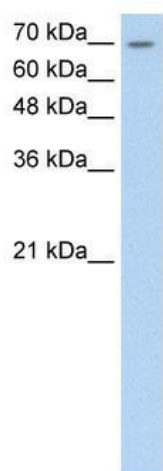
Product data:

Product Type:	Primary Antibodies
Applications:	WB
Recommended Dilution:	WB
Reactivity:	Human
Host:	Rabbit
Isotype:	IgG
Clonality:	Polyclonal
Immunogen:	The immunogen for Anti-LSR Antibody: synthetic peptide directed towards the C terminal of human LSR. Synthetic peptide located within the following region: GWDQEPAREQAGGGWRARRPRARSVDALDDLTPPSTAESGSRSPSTNGGR
Formulation:	Liquid. Purified antibody supplied in 1x PBS buffer with 0.09% (w/v) sodium azide and 2% sucrose. <i>Note that this product is shipped as lyophilized powder to China customers.</i>
Conjugation:	Unconjugated
Storage:	Store at -20°C as received.
Stability:	Stable for 12 months from date of receipt.
Predicted Protein Size:	70 kDa
Gene Name:	lipolysis stimulated lipoprotein receptor
Database Link:	NP_057009 Entrez Gene 51599 Human Q86X29
Background:	LSR has a probable role in the clearance of triglyceride-rich lipoprotein from blood. It binds chylomicrons, LDL and VLDL in presence of free fatty acids and allows their subsequent uptake in the cells.
Synonyms:	ILDR3; LISCH7
Note:	Immunogen sequence homology: Human: 100%; Dog: 86%; Horse: 79%; Yeast: 79%
Protein Families:	Druggable Genome, Transcription Factors, Transmembrane



[View online »](#)

Product images:



WB Suggested Anti-LSR Antibody Titration: 0.2-1 ug/ml; Positive Control: HepG2 cell lysate LSR is supported by BioGPS gene expression data to be expressed in HepG2