

Product datasheet for **TA331933**

MRPS7 Rabbit Polyclonal Antibody

Product data:

Product Type:	Primary Antibodies
Applications:	WB
Recommended Dilution:	WB
Reactivity:	Human
Host:	Rabbit
Isotype:	IgG
Clonality:	Polyclonal
Immunogen:	The immunogen for Anti-MRPS7 Antibody is: synthetic peptide directed towards the C-terminal region of Human MRPS7. Synthetic peptide located within the following region: QFEKYHAASAEEQATIERNPYTIFHQALKNCEPMIGLVPIKGGRFYQVP
Formulation:	Liquid. Purified antibody supplied in 1x PBS buffer with 0.09% (w/v) sodium azide and 2% sucrose. <i>Note that this product is shipped as lyophilized powder to China customers.</i>
Conjugation:	Unconjugated
Storage:	Store at -20°C as received.
Stability:	Stable for 12 months from date of receipt.
Predicted Protein Size:	27 kDa
Gene Name:	mitochondrial ribosomal protein S7
Database Link:	NP_057055 Entrez Gene 51081 Human Q9Y2R9



[View online »](#)

Background:

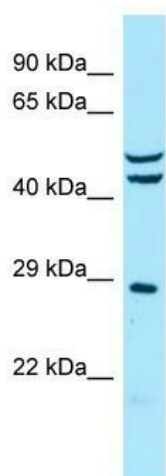
Mammalian mitochondrial ribosomal proteins are encoded by nuclear genes and help in protein synthesis within the mitochondrion. Mitochondrial ribosomes (mitoribosomes) consist of a small 28S subunit and a large 39S subunit. They have an estimated 75% protein to rRNA composition compared to prokaryotic ribosomes, where this ratio is reversed. Another difference between mammalian mitoribosomes and prokaryotic ribosomes is that the latter contain a 5S rRNA. Among different species, the proteins comprising the mitoribosome differ greatly in sequence, and sometimes in biochemical properties, which prevents easy recognition by sequence homology. This gene encodes a 28S subunit protein. In the prokaryotic ribosome, the comparable protein is thought to play an essential role in organizing the 3' domain of the 16 S rRNA in the vicinity of the P- and A-sites. Pseudogenes corresponding to this gene are found on chromosomes 8p and 12p.

Synonyms:

bMRP27a; MRP-S; MRP-S7; RP-S7; RPMS7; S7mt

Note:

Immunogen sequence homology: Dog: 100%; Rat: 100%; Horse: 100%; Human: 100%; Bovine: 100%; Pig: 93%; Mouse: 93%; Rabbit: 93%; Guinea pig: 77%

Product images:

Host: Rabbit; Target Name: MRPS7; Sample Tissue: MCF7 Whole Cell lysates; Antibody Dilution: 1.0ug/ml; MRPS7 is supported by BioGPS gene expression data to be expressed in MCF7