

## Product datasheet for **TA331932**

### RRP15 Rabbit Polyclonal Antibody

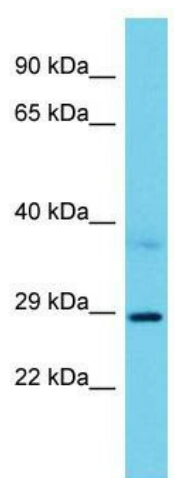
#### Product data:

Product Type:	Primary Antibodies
Applications:	WB
Recommended Dilution:	WB
Reactivity:	Human
Host:	Rabbit
Isotype:	IgG
Clonality:	Polyclonal
Immunogen:	The immunogen for Anti-RRP15 Antibody is: synthetic peptide directed towards the C-terminal region of Human RRP15. Synthetic peptide located within the following region: ISTVSKKDFISVLRGMDGSTNETASSRKKPKAKQTEVKSEEGPGWTILRD
Formulation:	Liquid. Purified antibody supplied in 1x PBS buffer with 0.09% (w/v) sodium azide and 2% sucrose. <i>Note that this product is shipped as lyophilized powder to China customers.</i>
Conjugation:	Unconjugated
Storage:	Store at -20°C as received.
Stability:	Stable for 12 months from date of receipt.
Predicted Protein Size:	28 kDa
Gene Name:	ribosomal RNA processing 15 homolog
Database Link:	<a href="#">NP_057136</a> <a href="#">Entrez Gene 51018 Human</a> <a href="#">Q9Y3B9</a>
Background:	This gene encodes a protein that co-purifies with human nucleoli. A similar protein in budding yeast is a component of pre-60S ribosomal particles, and is required for the early maturation steps of the 60S subunit.
Synonyms:	CGI-115; KIAA0507
Note:	Immunogen sequence homology: Human: 100%



[View online »](#)

## Product images:



Host: Rabbit; Target Name: RRP15; Sample Tissue: A549 Whole Cell lysates; Antibody Dilution: 1.0ug/ml. RRP15 is supported by BioGPS gene expression data to be expressed in A549