

Product datasheet for **TA331931**

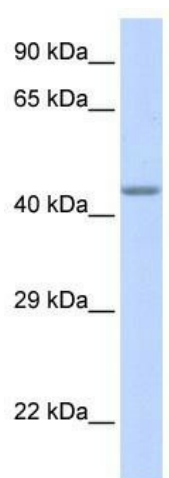
ZNF589 Rabbit Polyclonal Antibody

Product data:

Product Type:	Primary Antibodies
Applications:	WB
Recommended Dilution:	WB
Reactivity:	Human
Host:	Rabbit
Isotype:	IgG
Clonality:	Polyclonal
Immunogen:	The immunogen for Anti-ZNF589 Antibody: synthetic peptide directed towards the middle region of human ZNF589. Synthetic peptide located within the following region: TFGECALAFNQKSNLFRQKAVTAEKSSDKRQSQVCRECGRGRFSRKSQII
Formulation:	Liquid. Purified antibody supplied in 1x PBS buffer with 0.09% (w/v) sodium azide and 2% sucrose. <i>Note that this product is shipped as lyophilized powder to China customers.</i>
Conjugation:	Unconjugated
Storage:	Store at -20°C as received.
Stability:	Stable for 12 months from date of receipt.
Predicted Protein Size:	41 kDa
Gene Name:	zinc finger protein 589
Database Link:	NP_057173 Entrez Gene 51385 Human Q86UQ0
Background:	The function of Anti-ZFP589 has not yet been determined.
Synonyms:	SZF1
Note:	Immunogen sequence homology: Human: 100%
Protein Families:	Transcription Factors



[View online »](#)

Product images:

WB Suggested Anti-ZNF589 Antibody Titration:
0.2-1 ug/ml; ELISA Titer: 1: 62500; Positive
Control: Human Muscle