

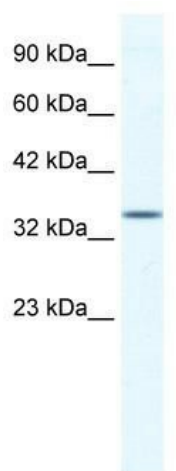
## Product datasheet for **TA331930**

### ZNF589 Rabbit Polyclonal Antibody

#### Product data:

Product Type:	Primary Antibodies
Applications:	WB
Recommended Dilution:	WB
Reactivity:	Human
Host:	Rabbit
Isotype:	IgG
Clonality:	Polyclonal
Immunogen:	The immunogen for Anti-ZFP589 Antibody: synthetic peptide directed towards the middle region of human ZFP589. Synthetic peptide located within the following region: LEIQLSPAQNASSEEVDRISKRAETPGFGAVRFGECALAFNQKSNLFRQK
Formulation:	Liquid. Purified antibody supplied in 1x PBS buffer with 0.09% (w/v) sodium azide and 2% sucrose.
Conjugation:	Unconjugated
Storage:	Store at -20°C as received.
Stability:	Stable for 12 months from date of receipt.
Predicted Protein Size:	41 kDa
Gene Name:	zinc finger protein 589
Database Link:	<a href="#">NP_057173</a> <a href="#">Entrez Gene 51385 Human</a> <a href="#">Q86UQ0</a>
Background:	The function of Anti-ZFP589 has not yet been determined.
Synonyms:	SZF1
Note:	Immunogen sequence homology: Human: 100%
Protein Families:	Transcription Factors


[View online »](#)

**Product images:**

WB Suggested Anti-ZFP589 Antibody Titration:  
1.25ug/ml; ELISA Titer: 1: 1562500; Positive  
Control: HepG2 cell lysate