

Product datasheet for **TA331929**

ZNF706 Rabbit Polyclonal Antibody

Product data:

Product Type:	Primary Antibodies
Applications:	IHC, WB
Recommended Dilution:	WB, IHC
Reactivity:	Human
Host:	Rabbit
Isotype:	IgG
Clonality:	Polyclonal
Immunogen:	The immunogen for Anti-ZNF706 Antibody: synthetic peptide directed towards the N terminal of human ZNF706. Synthetic peptide located within the following region: MARGQQKIQSQQKNAKKQAGQKKKQGHDKAAAKAALIYCTVCRTQMPD
Formulation:	Liquid. Purified antibody supplied in 1x PBS buffer with 0.09% (w/v) sodium azide and 2% sucrose. <i>Note that this product is shipped as lyophilized powder to China customers.</i>
Conjugation:	Unconjugated
Storage:	Store at -20°C as received.
Stability:	Stable for 12 months from date of receipt.
Predicted Protein Size:	8 kDa
Gene Name:	zinc finger protein 706
Database Link:	NP_057180 Entrez Gene 51123 Human Q9Y5V0
Background:	The function remains unknown.
Synonyms:	HSPC038; PNAS-106; PNAS-113
Note:	Immunogen sequence homology: Dog: 100%; Pig: 100%; Rat: 100%; Horse: 100%; Human: 100%; Mouse: 100%; Bovine: 100%; Rabbit: 100%; Guinea pig: 100%

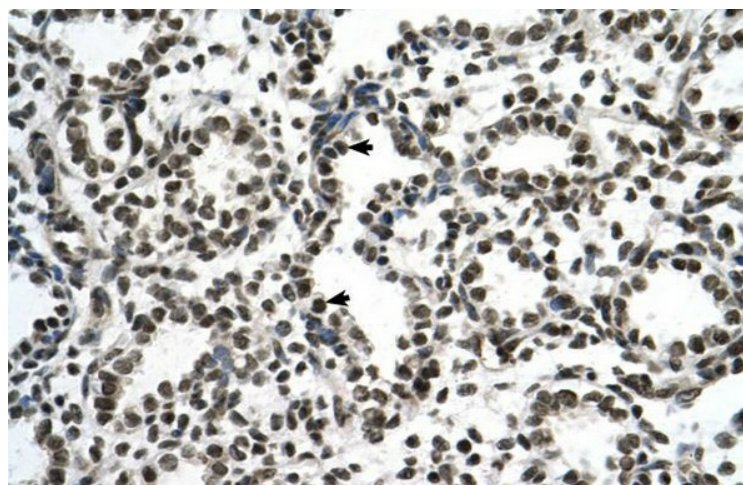


[View online »](#)

Product images:



WB Suggested Anti-ZNF706 Antibody Titration:
0.2-1 ug/ml; Positive Control: Transfected 293T



Human Lung