

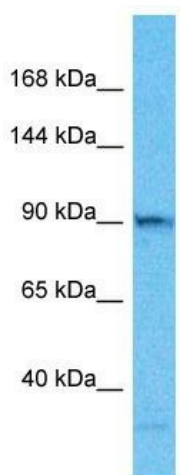
Product datasheet for TA331928

TELO2 Rabbit Polyclonal Antibody

Product data:

Product Type:	Primary Antibodies
Applications:	WB
Recommended Dilution:	WB
Reactivity:	Human
Host:	Rabbit
Isotype:	IgG
Clonality:	Polyclonal
Immunogen:	The immunogen for Anti-TELO2 Antibody is: synthetic peptide directed towards the C-terminal region of Human TELO2. Synthetic peptide located within the following region: LEDLMDELLEARSWLADVAEKDPDEDCRTLALRALLLLQRLKNRLLPPAS
Formulation:	Liquid. Purified antibody supplied in 1x PBS buffer with 0.09% (w/v) sodium azide and 2% sucrose.
Conjugation:	Unconjugated
Storage:	Store at -20°C as received.
Stability:	Stable for 12 months from date of receipt.
Predicted Protein Size:	92 kDa
Gene Name:	telomere maintenance 2
Database Link:	NP_057195 Entrez Gene 9894 Human Q9Y4R8
Background:	This gene encodes a protein that functions as an S-phase checkpoint protein in the cell cycle. The protein may also play a role in DNA repair.
Synonyms:	CLK2; TEL2; YHFS
Note:	Immunogen sequence homology: Pig: 100%; Horse: 100%; Human: 100%; Rat: 92%; Mouse: 92%; Rabbit: 92%; Guinea pig: 92%; Dog: 85%; Bovine: 85%


[View online »](#)

Product images:

Host: Rabbit

Target Name: TELO2

Sample Tissue: HepG2 Cell Lysate

Antibody Dilution: 1.0µg/ml

Host: Rabbit; Target Name: TELO2; Sample
Tissue: HepG2 Whole Cell lysates; Antibody
Dilution: 1.0ug/ml