

Product datasheet for **TA331925**

Suppressor of Fused (SUFU) Rabbit Polyclonal Antibody

Product data:

| | |
|-------------------------|--|
| Product Type: | Primary Antibodies |
| Applications: | WB |
| Recommended Dilution: | WB |
| Reactivity: | Human |
| Host: | Rabbit |
| Isotype: | IgG |
| Clonality: | Polyclonal |
| Immunogen: | The immunogen for Anti-SUFU Antibody: synthetic peptide directed towards the middle region of human SUFU. Synthetic peptide located within the following region: NGQGILELLRTVPIAGGPWLITDMRGETIFEIDPHLQERVVDKGIETDGS |
| Formulation: | Liquid. Purified antibody supplied in 1x PBS buffer with 0.09% (w/v) sodium azide and 2% sucrose. <i>Note that this product is shipped as lyophilized powder to China customers.</i> |
| Conjugation: | Unconjugated |
| Storage: | Store at -20°C as received. |
| Stability: | Stable for 12 months from date of receipt. |
| Predicted Protein Size: | 54 kDa |
| Gene Name: | SUFU negative regulator of hedgehog signaling |
| Database Link: | NP_057253 Entrez Gene 51684 Human Q9UMX1 |



[View online »](#)

Background: SUFU is a component of the Sonic hedgehog (SHH; MIM 600725)/Patched (PTCH; MIM 601309) signaling pathway. Mutations in genes encoding components of this pathway are deleterious for normal development and are associated with cancer-predisposing syndromes. SUFU encodes a component of the sonic hedgehog (SHH; MIM 600725)/patched (PTCH; MIM 601309) signaling pathway. Mutations in genes encoding components of this pathway are deleterious for normal development and are associated with cancer-predisposing syndromes (e.g., HPE3, MIM 142945; BCNS, MIM 109400; and GCPS, MIM 175700). [supplied by OMIM]. Publication Note: This RefSeq record includes a subset of the publications that are available for this gene. Please see the Entrez Gene record to access additional publications.

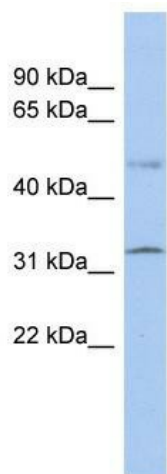
Synonyms: PRO1280; SUFUH; SUFUXL

Note: Immunogen sequence homology: Dog: 100%; Pig: 100%; Rat: 100%; Horse: 100%; Human: 100%; Mouse: 100%; Guinea pig: 100%; Bovine: 93%; Rabbit: 93%; Zebrafish: 93%

Protein Families: Druggable Genome, Transcription Factors

Protein Pathways: Basal cell carcinoma, Hedgehog signaling pathway, Pathways in cancer

Product images:



WB Suggested Anti-SUFU Antibody Titration: 0.2-1 ug/ml; ELISA Titer: 1: 312500; Positive Control: PANC1 cell lysate