

Product datasheet for **TA331924**

Amino adipate aminotransferase (AADAT) Rabbit Polyclonal Antibody

Product data:

Product Type:	Primary Antibodies
Applications:	WB
Recommended Dilution:	WB
Reactivity:	Human
Host:	Rabbit
Isotype:	IgG
Clonality:	Polyclonal
Immunogen:	The immunogen for Anti-AADAT Antibody: synthetic peptide directed towards the middle region of human AADAT. Synthetic peptide located within the following region: EIYELARKYDFLIIEDDPYYFLQFNKFRVPTFLSMDVDGRVIRADSFSKI
Formulation:	Liquid. Purified antibody supplied in 1x PBS buffer with 0.09% (w/v) sodium azide and 2% sucrose. <i>Note that this product is shipped as lyophilized powder to China customers.</i>
Conjugation:	Unconjugated
Storage:	Store at -20°C as received.
Stability:	Stable for 12 months from date of receipt.
Predicted Protein Size:	47 kDa
Gene Name:	amino adipate aminotransferase
Database Link:	NP_057312 Entrez Gene 51166 Human Q8N5Z0
Background:	This gene encodes a protein that is highly similar to mouse and rat kynurenine aminotransferase II. The rat protein is a homodimer with two transaminase activities. One activity is the transamination of alpha-amino adipic acid, a final step in the saccharopine pathway which is the major pathway for L-lysine catabolism. The other activity involves the transamination of kynurenine to produce kynurenine acid, the precursor of kynurenic acid which has neuroprotective properties. Several transcript variants encoding two different isoforms have been found for this gene. [provided by RefSeq, Nov 2013]



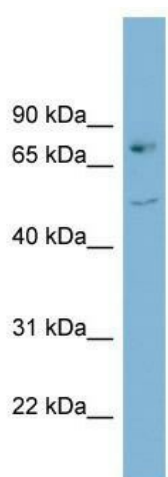
[View online »](#)

Synonyms: KAT2; KATII; KYAT2

Note: Immunogen sequence homology: Pig: 100%; Rat: 100%; Horse: 100%; Human: 100%; Yeast: 100%; Rabbit: 100%; Guinea pig: 100%; Dog: 92%; Mouse: 92%; Bovine: 92%; Zebrafish: 92%

Protein Pathways: Lysine biosynthesis, Lysine degradation, Metabolic pathways, Tryptophan metabolism

Product images:



WB Suggested Anti-AADAT Antibody Titration:
0.2-1 ug/ml; ELISA Titer: 1: 312500; Positive
Control: COLO205 cell lysate