

Product datasheet for **TA331922**

YTHDF2 Rabbit Polyclonal Antibody

Product data:

Product Type:	Primary Antibodies
Applications:	WB
Recommended Dilution:	WB
Reactivity:	Human
Host:	Rabbit
Isotype:	IgG
Clonality:	Polyclonal
Immunogen:	The immunogen for Anti-YTHDF2 Antibody is: synthetic peptide directed towards the C-terminal region of Human YTHDF2. Synthetic peptide located within the following region: WSQDKWKGRFDVRWIFVKDVPNSQLRHIRLENNENKPV TNSRDTQEVPLE
Formulation:	Liquid. Purified antibody supplied in 1x PBS buffer with 0.09% (w/v) sodium azide and 2% sucrose. <i>Note that this product is shipped as lyophilized powder to China customers.</i>
Conjugation:	Unconjugated
Storage:	Store at -20°C as received.
Stability:	Stable for 12 months from date of receipt.
Predicted Protein Size:	58 kDa
Gene Name:	YTH N6-methyladenosine RNA binding protein 2
Database Link:	NP_057342 Entrez Gene 51441 Human Q9Y5A9



[View online »](#)

Background:

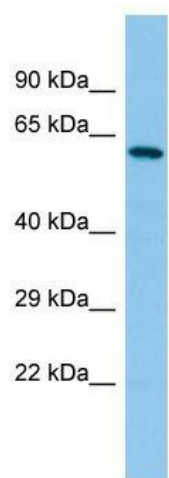
This gene encodes a member of the YTH (YT521-B homology) superfamily containing YTH domain. The YTH domain is typical for the eukaryotes and is particularly abundant in plants. The YTH domain is usually located in the middle of the protein sequence and may function in binding to RNA. In addition to a YTH domain, this protein has a proline rich region which may be involved in signal transduction. An Alu-rich domain has been identified in one of the introns of this gene, which is thought to be associated with human longevity. In addition, reciprocal translocations between this gene and the Runx1 (AML1) gene on chromosome 21 has been observed in patients with acute myeloid leukemia. This gene was initially mapped to chromosome 14, which was later turned out to be a pseudogene.

Synonyms:

CAHL; HGRG8; NY-REN-2

Note:

Immunogen sequence homology: Dog: 100%; Pig: 100%; Rat: 100%; Goat: 100%; Horse: 100%; Human: 100%; Mouse: 100%; Bovine: 100%; Rabbit: 100%; Zebrafish: 100%; Guinea pig: 100%

Product images:

Host: Rabbit; Target Name: YTHDF2; Sample Tissue: MCF7 Whole Cell lysates; Antibody Dilution: 1.0ug/ml