

Product datasheet for TA331920

ZNF12 Rabbit Polyclonal Antibody

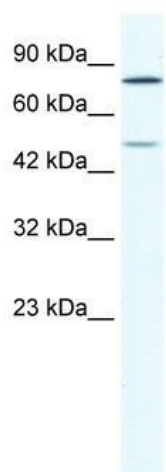
Product data:

Product Type:	Primary Antibodies
Applications:	WB
Recommended Dilution:	WB
Reactivity:	Human
Host:	Rabbit
Isotype:	IgG
Clonality:	Polyclonal
Immunogen:	The immunogen for Anti-ZNF12 Antibody: synthetic peptide directed towards the N terminal of human ZNF12. Synthetic peptide located within the following region: ADECSGCGKSLLEKLEKTHPGDQAYEFNQNGEPYTLNEESLYQKIRILE
Formulation:	Liquid. Purified antibody supplied in 1x PBS buffer with 0.09% (w/v) sodium azide and 2% sucrose.
Conjugation:	Unconjugated
Storage:	Store at -20°C as received.
Stability:	Stable for 12 months from date of receipt.
Predicted Protein Size:	77 kDa
Gene Name:	zinc finger protein 12
Database Link:	NP_057349 Entrez Gene 7559 Human P17014
Background:	Two members of the human zinc finger Kruppel family, ZNF 12 (KOX 3) and ZNF 26 (KOX 20), have been localized by somatic cell hybrid analysis and in situ chromosomal hybridization. The presence of individual human zinc finger genes in mouse-human hybrid DNAs was correlated with the presence of specific human chromosomes or regions of chromosomes in the corresponding cell hybrids. Analysis of such mouse-human hybrid DNAs assigned the ZNF 12 (KOX 3) gene to chromosome region 7p.
Synonyms:	GIOT-3; HZF11; KOX3; ZNF325
Note:	Immunogen sequence homology: Rat: 100%; Human: 100%; Dog: 86%; Horse: 79%


[View online »](#)

Protein Families: Transcription Factors

Product images:



WB Suggested Anti-ZNF12 Antibody Titration:
1.25ug/ml; ELISA Titer: 1: 312500; Positive
Control: Jurkat cell lysate ZNF12 is supported by
BioGPS gene expression data to be expressed in
Jurkat