

## Product datasheet for **TA331919**

### RNF138 Rabbit Polyclonal Antibody

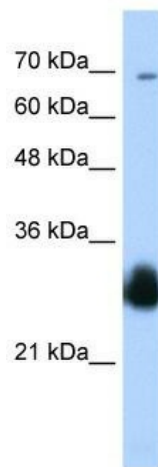
#### Product data:

Product Type:	Primary Antibodies
Applications:	WB
Recommended Dilution:	WB
Reactivity:	Human
Host:	Rabbit
Isotype:	IgG
Clonality:	Polyclonal
Immunogen:	The immunogen for Anti-RNF138 Antibody: synthetic peptide directed towards the C terminal of human RNF138. Synthetic peptide located within the following region: LFQIVPTCPICVSLPWGDPSQITRNFVSHLNQRHQFDYGEFVNLQLDEE
Formulation:	Liquid. Purified antibody supplied in 1x PBS buffer with 0.09% (w/v) sodium azide and 2% sucrose.
Conjugation:	Unconjugated
Storage:	Store at -20°C as received.
Stability:	Stable for 12 months from date of receipt.
Predicted Protein Size:	28 kDa
Gene Name:	ring finger protein 138
Database Link:	<a href="#">NP_057355</a> <a href="#">Entrez Gene 51444 Human</a> <a href="#">Q8WVD3</a>
Background:	RNF138 contains a RING finger, a motif present in a variety of functionally distinct proteins and known to be involved in protein-DNA and protein-protein interactions. The protein encoded by this gene contains a RING finger, a motif present in a variety of functionally distinct proteins and known to be involved in protein-DNA and protein-protein interactions. Alternatively spliced transcript variants encoding distinct isoforms have been observed.
Synonyms:	hNARF; HSD-4; NARE; STRIN
Note:	Immunogen sequence homology: Dog: 100%; Pig: 100%; Horse: 100%; Human: 100%; Mouse: 100%; Bovine: 100%; Rabbit: 100%; Guinea pig: 100%; Rat: 92%



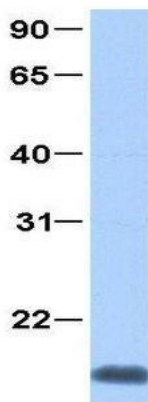
[View online »](#)

Product images:



WB Suggested Anti-RNF138 Antibody Titration: 0.2-1 ug/ml; Positive Control: Transfected 293T

### RNF138



Rabbit Anti-RNF138  
Sample Type: Human Jurkat  
Antibody Concentration: 1ug/mL

Host: Rabbit; Target Name: RNF138; Sample Tissue: Jurkat; Antibody Dilution: 1.0ug/ml; RNF138 is supported by BioGPS gene expression data to be expressed in Jurkat