

Product datasheet for TA331917

HSPA14 Rabbit Polyclonal Antibody

Product data:

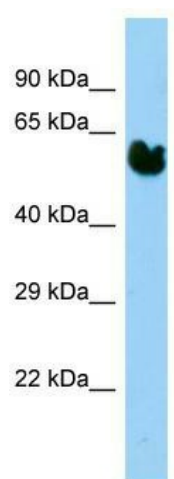
Product Type:	Primary Antibodies
Applications:	WB
Recommended Dilution:	WB
Reactivity:	Human
Host:	Rabbit
Isotype:	IgG
Clonality:	Polyclonal
Immunogen:	The immunogen for Anti-HSPA14 Antibody is: synthetic peptide directed towards the N-terminal region of Human HSPA14. Synthetic peptide located within the following region: AVWAYSENEEIVGLAAKQSRIRNISNTVMKVKQILGRSSSDPQAQKYIAE
Formulation:	Liquid. Purified antibody supplied in 1x PBS buffer with 0.09% (w/v) sodium azide and 2% sucrose. <i>Note that this product is shipped as lyophilized powder to China customers.</i>
Conjugation:	Unconjugated
Storage:	Store at -20°C as received.
Stability:	Stable for 12 months from date of receipt.
Predicted Protein Size:	56 kDa
Gene Name:	heat shock protein family A (Hsp70) member 14
Database Link:	NP_057383 Entrez Gene 51182 Human Q0VDF9
Background:	HSPA14 is a component of the ribosome-associated complex (RAC), a complex involved in folding or maintaining nascent polypeptides in a folding-competent state. In the RAC complex, It binds to the nascent polypeptide chain, while DNAJC2 stimulates its ATPase activity.
Synonyms:	HSP70-4; HSP70L1
Note:	Immunogen sequence homology: Human: 100%; Dog: 93%; Pig: 93%; Horse: 93%; Mouse: 93%; Rat: 86%; Rabbit: 86%; Guinea pig: 86%; Bovine: 79%



[View online »](#)

Protein Families: Druggable Genome, Stem cell - Pluripotency

Product images:



Host: Rabbit; Target Name: HSPA14; Sample Tissue: Fetal Heart lysates; Antibody Dilution: 1.0ug/ml