

Product datasheet for **TA331916**

RAPGEFL1 Rabbit Polyclonal Antibody

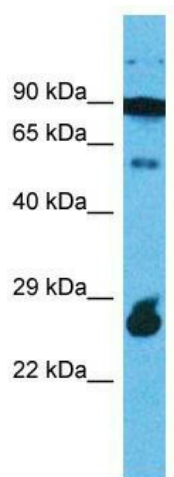
Product data:

Product Type:	Primary Antibodies
Applications:	WB
Recommended Dilution:	WB
Reactivity:	Human
Host:	Rabbit
Isotype:	IgG
Clonality:	Polyclonal
Immunogen:	The immunogen for Anti-RAPGEFL1 Antibody is: synthetic peptide directed towards the C-terminal region of Human RAPGEFL1. Synthetic peptide located within the following region: KFKNLF R KFENLTDP C RNHKSYREVISKMKPPVIPFVPLILKDLTFLHEG
Formulation:	Liquid. Purified antibody supplied in 1x PBS buffer with 0.09% (w/v) sodium azide and 2% sucrose. <i>Note that this product is shipped as lyophilized powder to China customers.</i>
Conjugation:	Unconjugated
Storage:	Store at -20°C as received.
Stability:	Stable for 12 months from date of receipt.
Predicted Protein Size:	56 kDa
Gene Name:	Rap guanine nucleotide exchange factor like 1
Database Link:	NP_057423 Entrez Gene 51195 Human Q9UHV5
Background:	RAPGEFL1 is a probable guanine nucleotide exchange factor (GEF).
Synonyms:	Link-GEFII
Note:	Immunogen sequence homology: Pig: 100%; Rat: 100%; Horse: 100%; Human: 100%; Mouse: 100%; Bovine: 100%; Rabbit: 100%; Guinea pig: 100%; Zebrafish: 82%
Protein Families:	Druggable Genome



[View online »](#)

Product images:



Host: Rabbit; Target Name: RAPGEFL1; Sample
Tissue: 721_B Whole cell lysates; Antibody
Dilution: 1.0ug/ml